

## Product datasheet for TP322772M

### RHOF (NM\_019034) Human Recombinant Protein

#### Product data:

Product Type:	Recombinant Proteins
Description:	Purified recombinant protein of Homo sapiens ras homolog gene family, member F (in filopodia) (RHOF), 100 µg
Species:	Human
Expression Host:	HEK293T
Expression cDNA Clone or AA Sequence:	>RC222772 representing NM_019034 Red=Cloning site Green=Tags(s)

MDAPGALAQTAAPGPGRKELKIVIVGDGGCGKTSLLMVYSQGSFPEHYAPSVFEKYTASVTVGSKEVTLN  
LYDTAGQEDYDRLRPLSYQNTHLVLCYDVMNPTSVDNVLIKWFPEVTHFCRGIPMVLIGCKTDLRKDKE  
QLRKLRAAQLEPITYMQGLSACEQIRAALYLECSAKFRENVEDVFREAAKVALSALKKAQRQKKRRLLCLL

TRTRPLEQKLISEEDLAANDILDYKDDDDKV

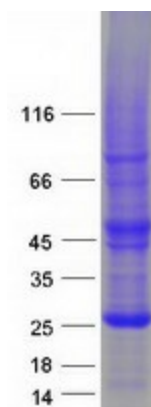
Tag:	C-Myc/DDK
Predicted MW:	23.4 kDa
Concentration:	>0.05 µg/µL as determined by microplate BCA method
Purity:	> 80% as determined by SDS-PAGE and Coomassie blue staining
Buffer:	25 mM Tris-HCl, 100 mM glycine, pH 7.3, 10% glycerol
Preparation:	Recombinant protein was captured through anti-DDK affinity column followed by conventional chromatography steps.
Note:	For testing in cell culture applications, please filter before use. Note that you may experience some loss of protein during the filtration process.
Storage:	Store at -80°C.
Stability:	Stable for 12 months from the date of receipt of the product under proper storage and handling conditions. Avoid repeated freeze-thaw cycles.
RefSeq:	<a href="#">NP_061907</a>
Locus ID:	54509



[View online »](#)

UniProt ID:	<u>Q9HBH0</u>
RefSeq Size:	2451
Cytogenetics:	12q24.31
RefSeq ORF:	633
Synonyms:	ARHF; RIF
Summary:	Plasma membrane-associated small GTPase which cycles between an active GTP-bound and an inactive GDP-bound state. Causes the formation of thin, actin-rich surface projections called filopodia. Functions cooperatively with CDC42 and Rac to generate additional structures, increasing the diversity of actin-based morphology.[UniProtKB/Swiss-Prot Function]

### Product images:



Coomassie blue staining of purified RHOF protein (Cat# [TP322772]). The protein was produced from HEK293T cells transfected with RHOF cDNA clone (Cat# [RC222772]) using MegaTran 2.0 (Cat# [TT210002]).