

Product datasheet for **TP322768M**

XPNPEP2 (NM_003399) Human Recombinant Protein

Product data:

Product Type:	Recombinant Proteins
Description:	Recombinant protein of human X-prolyl aminopeptidase (aminopeptidase P) 2, membrane-bound (XPNPEP2), 100 µg
Species:	Human
Expression Host:	HEK293T
Expression cDNA Clone or AA Sequence:	>RC222768 representing NM_003399 Red =Cloning site Green =Tags(s)

MARAHWGCCPWLVLLCACAWGHTKPVDLGGQDVRNCSTNPPYLPVTWNTTMSLTALRQQMQTQNLSAYI
IPGTAHMNEYIGQHDERRAWITGFTGSAGTAVTMKKAHVWTDSDRYWTQAERQMDCNWELHKEVGTPI
VTWLLTEIPAGGRVGFDPFLLSIDTWESYDLALQGSNRQLVSITTNLVDLVWGSERPPVNPQIYALQEA
FTGSTWQEKVSGVRSQMQRKQKVPVAVLLSALEETAWLFLNLRASDIPYNPFFYSYTLTSSIRLFANKS
RFSSETLSYLNSSCTGPMCVQIEDYSQVRDSIQAYSLGDVRIWIGTSYTMYGIVEMIPKEKLVTDYSPV
MMTKAVKNSKEQALLKASHVRDAVAVIRYLWLEKNVPKGTVDEFSGAEIVDKFRGEEQFSSGSPFETIS
ASGLNAALAHYSPTKELNRKLSSEDEMYLLDSGGQYWDGTTDITRTVHWGTPSAFQKEAYTRVLIGNIDL
RLIFPAATSGRMVEAFARRALWDAGLNYGHGTGHGIGNFLCVHEWPVGFQSNNIAMAKGMFTSIEPGYYK
DGEFGIRLEDVALVEAKTKYPGSYLTFEWSFVYPYDRNLIDVSLLSPEHLQYLNRYQTIREKVGPELQ
RRQLLEEFEWLQHQHTEPLAARAPDTASWASVLVSTLAILGWSV

TRTRPLEQKLISEEDLAANDILDYKDDDDKV

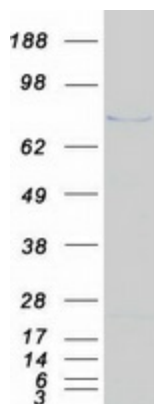
Tag:	C-Myc/DDK
Predicted MW:	75.4 kDa
Concentration:	>0.05 µg/µL as determined by microplate BCA method
Purity:	> 80% as determined by SDS-PAGE and Coomassie blue staining
Buffer:	25 mM Tris-HCl, 100 mM glycine, pH 7.3, 10% glycerol
Preparation:	Recombinant protein was captured through anti-DDK affinity column followed by conventional chromatography steps.
Note:	For testing in cell culture applications, please filter before use. Note that you may experience some loss of protein during the filtration process.
Storage:	Store at -80°C.



[View online »](#)

Stability:	Stable for 12 months from the date of receipt of the product under proper storage and handling conditions. Avoid repeated freeze-thaw cycles.
RefSeq:	<u>NP_003390</u>
Locus ID:	7512
UniProt ID:	<u>O43895</u>
RefSeq Size:	3329
Cytogenetics:	Xq26.1
RefSeq ORF:	2022
Synonyms:	AEACEI; APP2
Summary:	Aminopeptidase P is a hydrolase specific for N-terminal imido bonds, which are common to several collagen degradation products, neuropeptides, vasoactive peptides, and cytokines. Structurally, the enzyme is a member of the 'pita bread fold' family and occurs in mammalian tissues in both soluble and GPI-anchored membrane-bound forms. A membrane-bound and soluble form of this enzyme have been identified as products of two separate genes. [provided by RefSeq, Jul 2008]
Protein Families:	Druggable Genome, Protease

Product images:



Coomassie blue staining of purified XPNPEP2 protein (Cat# [TP322768]). The protein was produced from HEK293T cells transfected with XPNPEP2 cDNA clone (Cat# [RC222768]) using MegaTran 2.0 (Cat# [TT210002]).