

## Product datasheet for **TP322746M**

### RCCD1 (NM\_001017919) Human Recombinant Protein

#### Product data:

**Product Type:** Recombinant Proteins  
**Description:** Recombinant protein of human RCC1 domain containing 1 (RCCD1), transcript variant 2, 100 µg  
**Species:** Human  
**Expression Host:** HEK293T  
**Expression cDNA Clone or AA Sequence:** >RC222746 representing NM\_001017919  
**Red**=Cloning site **Green**=Tags(s)

MAERPGAWFGFGFCGFGQELGSGRGRQVHSPSPLRAGVDICRVASWSYAFVTRGGRLELSGSASGAA  
GRCKDAWASEGLLAVLRAGPGPEALLQVWAAESALRGEPLWAQNVVPEAEGEDDPAGEAQAGRLPLLPCA  
RAYVSPRAPFYRPLAPELRARQLELGAEHALLLDAAGQVFSWGGGRHGQLGHGTLAELEPRLLLEALQGL  
VMAEVAAGGWHSVCVSETGDIYIWGWNESGQLALPTRNLAEDGETVAREATELNEDGSQVKRTGGAEDGA  
PAPFIAVQPPALLDLPMGSDAVKASCSRHTAVWTRTGELYTWGWGKYGQLGHEDTTLDRPRRVEYFV  
DKQLQVKAVTCGPWNTYVYAVEKGKS

**SGP**TRRRLE**QKLISEEDLAANDILDYKDDDDKV**

**Tag:** C-Myc/DDK  
**Predicted MW:** 39.9 kDa  
**Concentration:** >0.05 µg/µL as determined by microplate BCA method  
**Purity:** > 80% as determined by SDS-PAGE and Coomassie blue staining  
**Buffer:** 25 mM Tris-HCl, 100 mM glycine, pH 7.3, 10% glycerol  
**Preparation:** Recombinant protein was captured through anti-DDK affinity column followed by conventional chromatography steps.  
**Note:** For testing in cell culture applications, please filter before use. Note that you may experience some loss of protein during the filtration process.  
**Storage:** Store at -80°C.  
**Stability:** Stable for 12 months from the date of receipt of the product under proper storage and handling conditions. Avoid repeated freeze-thaw cycles.  
**RefSeq:** [NP\\_001017919](#)  
**Locus ID:** 91433



[View online »](#)

UniProt ID: [A6NED2](#), [A0A024RC72](#)

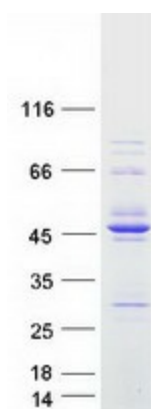
RefSeq Size: 2690

Cytogenetics: 15q26.1

RefSeq ORF: 1128

**Summary:** Plays a role in transcriptional repression of satellite repeats, possibly by regulating H3K36 methylation levels in centromeric regions together with KDM8 (PubMed:24981860). Possibly together with KDM8, is involved in proper mitotic spindle organization and chromosome segregation (PubMed:24981860). Plays a role in regulating alpha-tubulin deacetylation and cytoskeletal microtubule stability, thereby promoting cell migration and TGF-beta-induced epithelial to mesenchymal transition (EMT), potentially through the inhibition of KDM8 (PubMed:28455245).[UniProtKB/Swiss-Prot Function]

### Product images:



Coomassie blue staining of purified RCCD1 protein (Cat# [TP322746]). The protein was produced from HEK293T cells transfected with RCCD1 cDNA clone (Cat# [RC222746]) using MegaTran 2.0 (Cat# [TT210002]).