

Product datasheet for **TP322746L**

RCCD1 (NM_001017919) Human Recombinant Protein

Product data:

Product Type:	Recombinant Proteins
Description:	Recombinant protein of human RCC1 domain containing 1 (RCCD1), transcript variant 2, 1 mg
Species:	Human
Expression Host:	HEK293T
Expression cDNA Clone or AA Sequence:	>RC222746 representing NM_001017919 Red =Cloning site Green =Tags(s)

MAERPGAWFGFGFCGFGQELGSGRGRQVHSPSPLRAGVDICRVASWSYAFVTRGGRLELSGSASGAA
GRCKDAWASEGLLAVLRAGPGPEALLQVWAAESALRGEPLWAQNVVPEAEGEDDPAGEAQAGRLPLLPCA
RAYVSPRAPFYRPLAPELRARQLELGAEHALLLDAAGQVFSWGGGRHGQLGHGTLAELEPRLLEALQGL
VMAEVAAGGWHSVCVSETGDIYIWGWNESGQLALPTRNLAEDGETVAREATELNEDGSQVKRTGGAEDGA
PAPFIAVQPPALLDPLMGSDAVKASCSRHTAVWTRTGELYTWGWGKYGQLGHEDTTLDRPRRVEYFV
DKQLQVKAVTCGPWNTYVYAVEKGKS

SGPTRRRLE**QKLISEEDLAANDILDYKDDDDK**V

Tag:	C-Myc/DDK
Predicted MW:	39.9 kDa
Concentration:	>0.05 µg/µL as determined by microplate BCA method
Purity:	> 80% as determined by SDS-PAGE and Coomassie blue staining
Buffer:	25 mM Tris-HCl, 100 mM glycine, pH 7.3, 10% glycerol
Preparation:	Recombinant protein was captured through anti-DDK affinity column followed by conventional chromatography steps.
Note:	For testing in cell culture applications, please filter before use. Note that you may experience some loss of protein during the filtration process.
Storage:	Store at -80°C.
Stability:	Stable for 12 months from the date of receipt of the product under proper storage and handling conditions. Avoid repeated freeze-thaw cycles.
RefSeq:	<u>NP_001017919</u>
Locus ID:	91433



[View online »](#)

UniProt ID: [A6NED2](#), [A0A024RC72](#)

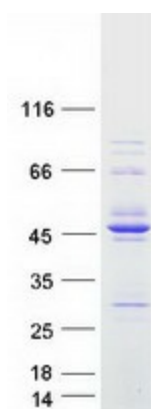
RefSeq Size: 2690

Cytogenetics: 15q26.1

RefSeq ORF: 1128

Summary: Plays a role in transcriptional repression of satellite repeats, possibly by regulating H3K36 methylation levels in centromeric regions together with KDM8 (PubMed:24981860). Possibly together with KDM8, is involved in proper mitotic spindle organization and chromosome segregation (PubMed:24981860). Plays a role in regulating alpha-tubulin deacetylation and cytoskeletal microtubule stability, thereby promoting cell migration and TGF-beta-induced epithelial to mesenchymal transition (EMT), potentially through the inhibition of KDM8 (PubMed:28455245).[UniProtKB/Swiss-Prot Function]

Product images:



Coomassie blue staining of purified RCCD1 protein (Cat# [TP322746]). The protein was produced from HEK293T cells transfected with RCCD1 cDNA clone (Cat# [RC222746]) using MegaTran 2.0 (Cat# [TT210002]).