

Product datasheet for **TP322746**

RCCD1 (NM_001017919) Human Recombinant Protein

Product data:

Product Type: Recombinant Proteins
Description: Recombinant protein of human RCC1 domain containing 1 (RCCD1), transcript variant 2, 20 µg
Species: Human
Expression Host: HEK293T
Expression cDNA Clone or AA Sequence: >RC222746 representing NM_001017919
Red=Cloning site **Green**=Tags(s)

MAERPGAWFGFGFCGFGQELGSGRGRQVHSPSPLRAGVDICRVASWSYAFVTRGGRLELSGSASGAA
GRCKDAWASEGLLAVLRAGPGPEALLQVWAAESALRGEPLWAQNVVPEAEGEDDPAGEAQAGRLPLLPCA
RAYVSPRAPFYRPLAPELRARQLELGAEHALLLDAAGQVFSWGGGRHGQLGHGTLEAELEPRLLALQGL
VMAEVAAGGWHSVCVSETGDIYIWGWNESGQLALPTRNLAEDGETVAREATELNEDGSQVKRTGGAEDGA
PAPFIAVQPPALLDLPMGSDAVKASCGSRHTAVWTRTGELYTWGWGKYGQLGHEDTTLDRPRRVEYFV
DKQLQVKAVTCGPWNTYVYAVEKGKS

SGPTRRRLEQKLISEEDLAANDILDYKDDDDKV

Tag: C-Myc/DDK
Predicted MW: 39.9 kDa
Concentration: >0.05 µg/µL as determined by microplate BCA method
Purity: > 80% as determined by SDS-PAGE and Coomassie blue staining
Buffer: 25 mM Tris-HCl, 100 mM glycine, pH 7.3, 10% glycerol
Preparation: Recombinant protein was captured through anti-DDK affinity column followed by conventional chromatography steps.
Note: For testing in cell culture applications, please filter before use. Note that you may experience some loss of protein during the filtration process.
Storage: Store at -80°C.
Stability: Stable for 12 months from the date of receipt of the product under proper storage and handling conditions. Avoid repeated freeze-thaw cycles.
RefSeq: [NP_001017919](#)
Locus ID: 91433



[View online »](#)

UniProt ID: [A6NED2](#), [A0A024RC72](#)

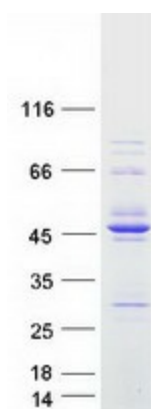
RefSeq Size: 2690

Cytogenetics: 15q26.1

RefSeq ORF: 1128

Summary: Plays a role in transcriptional repression of satellite repeats, possibly by regulating H3K36 methylation levels in centromeric regions together with KDM8 (PubMed:24981860). Possibly together with KDM8, is involved in proper mitotic spindle organization and chromosome segregation (PubMed:24981860). Plays a role in regulating alpha-tubulin deacetylation and cytoskeletal microtubule stability, thereby promoting cell migration and TGF-beta-induced epithelial to mesenchymal transition (EMT), potentially through the inhibition of KDM8 (PubMed:28455245).[UniProtKB/Swiss-Prot Function]

Product images:



Coomassie blue staining of purified RCCD1 protein (Cat# TP322746). The protein was produced from HEK293T cells transfected with RCCD1 cDNA clone (Cat# [RC222746]) using MegaTran 2.0 (Cat# [TT210002]).