

Product datasheet for **TP322740L**

CARD11 (NM_032415) Human Recombinant Protein

Product data:

Product Type:	Recombinant Proteins
Description:	Purified recombinant protein of Homo sapiens caspase recruitment domain family, member 11 (CARD11), 1 mg
Species:	Human
Expression Host:	HEK293T
Expression cDNA Clone or AA Sequence:	>Peptide sequence encoded by RC222740 Blue=ORF Red=Cloning site Green=Tag(s)

MPGGGPEMDDYMETLKDEEDALWENVECNHRHMSRYINPAKLTPYLRQCKVIDEQDEDEVLNAPMLPSK
INRAGRLLDILHTKGQRGYVVFLESLEFYPELYKLVGTGKEPTRRFSTIVVEEGHEGLTHFLMNEVIKL
QQQMKAQDLQRCCELLARLRQLEDEKKQMTLTRVELLTFQERYKMKKEERDSYNDELVKVKDDNYNLAMR
YAQLSEEKNMAVMRSRDLQLEIDQLKHRLNKMEEECKLERNQSLKLNDIENRPKKEQVLELERENEML
KTKNQELQSIIQAGKRSLPDSKAILDILEHDRKEALEDRQELVNRIYNLQEEARQAEELRDKYLEEKE
DLELKCSLTKGDCEMYKHRMNTVMLQLEEVERERDQAFHSRDEAQTQYSQCLIEKDKYRKQIRELEEKN
DEMRIEMVRREACIVNLESKLRRLSKDSNNLDQSLPRNLPVTIISQDFGDASPRTNGQEADDSSTSEES
PEDSKYFLPYHPPQRRMNLKGIQLQRAKSPISLKRSTDFQAKGHEEEGTDASPSSCGSLPITNSFTKMQ
PPRSRSSIMSITAEPNGDSIVRRYKEDAPHRSTVEEDNDSGGFDALDLDSSHERYSFGPSSIHSSSS
SHQSEGLDAYDLEQVNL MFRKFSLERPFRPSVTSVGHVVRGPGPSVQHTTLNGDSLTSQLTLLGGNARG
FVHSVKPGSLAEKAGLREGHQLLLLLEG CIRGERQSVPLDCTCKEEAHWTIQRCGPVTLHYKVNHEGYR
KLVKDMEDGLITSGDSFYIRLNLNISSQLDACTMSLKCDDVHVHVRDRTMYQDRHEWLCARVDPFDHDL
MGTIPSY SRAQQLLVKLQRLMHRGSREEVDGTHHTLRALRNTLQPEEALSTSDPRVSPRLSRASFLG
QLLQFVSRSENKYKRMNSNERVRIISGSPGLSLARSSLDATKLLTEKQEELDPESELGKNLSLIPYSLV
RAFYCERRRPVLFPTVLAQTLVQRLN SGGAMEFTICKSDIVTRDEFLLRRQKTETIYSREKNPNAFE
CIAPANIEVA AAKNKHCLLEAGIGCTRD LIKSNIYPIVLFIRVCEKNIKRFRKLLRPETEEEF LRVCR
LKEKELEALPCLYATVEPDMWGSVEELLRVKDKIGEEQRKTIWVDEDQL
SGPTRTRPLEQKLISEEDLAANDILDYKDDDDKV

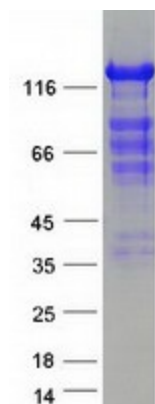
Recombinant protein using RC222740 also available, [TP322740](#)

Tag:	C-Myc/DDK
Predicted MW:	133.1 kDa
Concentration:	>0.05 µg/µL as determined by microplate BCA method



[View online »](#)

Purity:	> 80% as determined by SDS-PAGE and Coomassie blue staining
Buffer:	25 mM Tris-HCl, 100 mM glycine, pH 7.3, 10% glycerol
Preparation:	Recombinant protein was captured through anti-DDK affinity column followed by conventional chromatography steps.
Note:	For testing in cell culture applications, please filter before use. Note that you may experience some loss of protein during the filtration process.
Storage:	Store at -80°C.
Stability:	Stable for 12 months from the date of receipt of the product under proper storage and handling conditions. Avoid repeated freeze-thaw cycles.
RefSeq:	NP_115791
Locus ID:	84433
UniProt ID:	Q9BXL7 , A0A024R854 , Q8TES3
RefSeq Size:	4372
Cytogenetics:	7p22.2
RefSeq ORF:	3462
Synonyms:	BENTA; BIMP3; CARMA1; IMD11; IMD11A; PPBL
Summary:	The protein encoded by this gene belongs to the membrane-associated guanylate kinase (MAGUK) family, a class of proteins that functions as molecular scaffolds for the assembly of multiprotein complexes at specialized regions of the plasma membrane. This protein is also a member of the CARD protein family, which is defined by carrying a characteristic caspase-associated recruitment domain (CARD). This protein has a domain structure similar to that of CARD14 protein. The CARD domains of both proteins have been shown to specifically interact with BCL10, a protein known to function as a positive regulator of cell apoptosis and NF-kappaB activation. When expressed in cells, this protein activated NF-kappaB and induced the phosphorylation of BCL10. [provided by RefSeq, Jul 2008]
Protein Families:	Druggable Genome
Protein Pathways:	B cell receptor signaling pathway, T cell receptor signaling pathway

Product images:

Coomassie blue staining of purified CARD11 protein (Cat# [TP322740]). The protein was produced from HEK293T cells transfected with CARD11 cDNA clone (Cat# [RC222740]) using MegaTran 2.0 (Cat# [TT210002]).