

Product datasheet for TP322740

CARD11 (NM_032415) Human Recombinant Protein

Product data:

| | |
|---------------------------------------|---|
| Product Type: | Recombinant Proteins |
| Description: | Purified recombinant protein of Homo sapiens caspase recruitment domain family, member 11 (CARD11), 20 µg |
| Species: | Human |
| Expression Host: | HEK293T |
| Expression cDNA Clone or AA Sequence: | >Peptide sequence encoded by RC222740 Blue=ORF Red=Cloning site Green=Tag(s) |

MPGGGPEMDDYMETLKDEEDALWENVECNHRHMSRYINPAKLTPYLRQCKVIDEQDEDEVLNAPMLPSK
INRAGRLLDILHTKGQRGYVVFLESLEFYPELYKLVGTGKEPTRRFSTIVVEEGHEGLTHFLMNEVIKL
QQQMKAIDLQRCCELLARLRQLEDEKKQMTLTRVELLTFQERYKMKKEERDSYNDELVKVKDDNYNLAMR
YAQLSEEKNMAVMRSRDLQLEIDQLKHRLNKMEEECKLERNQSLKLNDIENRPKKEQVLELERENEML
KTKNQELQSIIQAGKRSLPDSKAILDILEHDRKEALEDRQELVNRIYNLQEEARQAEELRDKYLEEKE
DLELKCSLTKGDCEMYKHRMNTVMLQLEEVERERDQAFHSRDEAQTQYSQCLIEKDKYRKQIRELEEKN
DEMRIEMVRREACIVNLESKLRRLSKDSNNLDQSLPRNLPVTIISQDFGDASPRNGQEADDSTSEES
PEDSKYFLPYHPPQRRMNLKGIQLQRAKSPISLKRSTDFQAKGHEEEGTDASPSSCGSLPITNSFTKMQ
PPRSRSSIMSITAEPNGDSIVRRYKEDAPHRSTVEEDNDSGGFDALDLDSSHERYSFGPSSIHSSSS
SHQSEGLDAYDLEQVNL MFRKFSLERPFRPSVTSVGHVVRGPGPSVQHTTLNGDSLTSQLTLLGGNARG
FVHSVKPGSLAEKAGLREGHQLLLLLEG CIRGERQSVPLDCTCKEEAHWTIQRCGPVTLHYKVNHEGYR
KLVKDMEDGLITSGDSFYIRLNLNISSQLDACTMSLKCDDVHVHVRDTMYQDRHEWLCARVDPFDHDL
MGTIPSY SRAQQLLVKLQRLMHRGSREEVDGTHHTLRALRNTLQPEEALSTSDPRVSPRLSRASFLG
QLLQFVSRSENKYKRMNSNERVRIISGSPGLSLARSSLDATKLLTEKQEELDPESELGKNLSLIPYSLV
RAFYCERRRPVLFPTVLA KTLVQRLN SGGAMEFTICKSDIVTRDEF LRRQKTETIYSREKNPNAFE
CIAPANIEVA AAKNKHCLLEAGIGCTRD LIKSNIYPIVLFIRVCEKNIKRFRKLLPRPETEEEF LRVCR
LKEKELEALPCLYATVEPDMWGSVEELLRVKDKIGEEQRKTIWVDEDQL
SGPTRTRPLEQKLISEEDLAANDILDYKDDDDKV

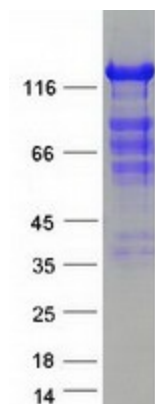
Recombinant protein using RC222740 also available, [TP322740](#)

| | |
|----------------|--|
| Tag: | C-Myc/DDK |
| Predicted MW: | 133.1 kDa |
| Concentration: | >0.05 µg/µL as determined by microplate BCA method |



[View online »](#)

| | |
|--------------------------|---|
| Purity: | > 80% as determined by SDS-PAGE and Coomassie blue staining |
| Buffer: | 25 mM Tris-HCl, 100 mM glycine, pH 7.3, 10% glycerol |
| Preparation: | Recombinant protein was captured through anti-DDK affinity column followed by conventional chromatography steps. |
| Note: | For testing in cell culture applications, please filter before use. Note that you may experience some loss of protein during the filtration process. |
| Storage: | Store at -80°C. |
| Stability: | Stable for 12 months from the date of receipt of the product under proper storage and handling conditions. Avoid repeated freeze-thaw cycles. |
| RefSeq: | NP_115791 |
| Locus ID: | 84433 |
| UniProt ID: | Q9BXL7 , A0A024R854 , Q8TES3 |
| RefSeq Size: | 4372 |
| Cytogenetics: | 7p22.2 |
| RefSeq ORF: | 3462 |
| Synonyms: | BENTA; BIMP3; CARMA1; IMD11; IMD11A; PPBL |
| Summary: | The protein encoded by this gene belongs to the membrane-associated guanylate kinase (MAGUK) family, a class of proteins that functions as molecular scaffolds for the assembly of multiprotein complexes at specialized regions of the plasma membrane. This protein is also a member of the CARD protein family, which is defined by carrying a characteristic caspase-associated recruitment domain (CARD). This protein has a domain structure similar to that of CARD14 protein. The CARD domains of both proteins have been shown to specifically interact with BCL10, a protein known to function as a positive regulator of cell apoptosis and NF-kappaB activation. When expressed in cells, this protein activated NF-kappaB and induced the phosphorylation of BCL10. [provided by RefSeq, Jul 2008] |
| Protein Families: | Druggable Genome |
| Protein Pathways: | B cell receptor signaling pathway, T cell receptor signaling pathway |

Product images:

Coomassie blue staining of purified CARD11 protein (Cat# TP322740). The protein was produced from HEK293T cells transfected with CARD11 cDNA clone (Cat# [RC222740]) using MegaTran 2.0 (Cat# [TT210002]).