

## Product datasheet for **TP322718M**

### **MAD1 (MAD1L1) (NM\_001013836) Human Recombinant Protein**

#### Product data:

Product Type:	Recombinant Proteins
Description:	Recombinant protein of human MAD1 mitotic arrest deficient-like 1 (yeast) (MAD1L1), transcript variant 2, 100 µg
Species:	Human
Expression Host:	HEK293T
Expression cDNA Clone or AA Sequence:	>RC222718 protein sequence <b>Red</b> =Cloning site <b>Green</b> =Tags(s)

MEDLGENTMVLSTLRSLNFIQRVEGGSGLDISTSAPGSLQMQYQQSMQLEERAEQIRSKSHLIQVERE  
KMQMELSHKRARVELERAASSTARNYEREVDRNQELLTRIRQLQEREAGAEKMQEQLERNRQCQNLD  
ASKRLREKEDSLAQAGETINALKGRISELQWSVMDQEMRVKRLSEKQELQEQLDLQHKKCQEANQIKIE  
LQASQEARADHEQQIKDLEQKLSLQEQDAAIVKNMKSELVRLPRLERELKQLREESAHLREMRETNGLLQ  
EELEGLQRKLGROEKMQETLVGLELENERLLAKLQSWERLDQTMGLSIRTPEDLSRFVVELQQRELAL  
KNSAVTSSARGLEKARQQLEELRQVSGQLLEERKKRETHEALARRLQKRVLLLTKERDGMRAILGSYDS  
ELTPAEYSPQLTRRMREAEDMVQKVHSHSAEAEALSQALEELGGQKQRADMLEMELKMLKSQSSSAEQS  
FLFSREEADTLRLKVEELEGERSRLEEEKRMLEAQLERRALQGDYDQSRTKVLHMSLNPTSVARQRLRED  
HSQLQAECERLRGLLRAMERGGTVPADLEAAAASLPSSKEVAELKKQVESAEELKNQRLKEVFQTKIQEFR  
KACYTLTGYQIDITTENQYRLTSLYAEHPGDCLIFKATSPSGSKMQLLETEFSHTVGEIEVHLRRQDSI  
PAFLSSLTLELFSRQTVA

**TRTRPLEQKLISEEDLAANDILDYKDDDDKV**

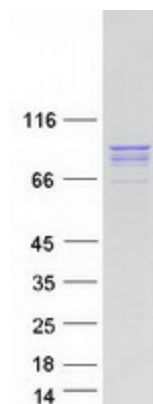
Tag:	C-Myc/DDK
Predicted MW:	82.9 kDa
Concentration:	>0.05 µg/µL as determined by microplate BCA method
Purity:	> 80% as determined by SDS-PAGE and Coomassie blue staining
Buffer:	25 mM Tris-HCl, 100 mM glycine, pH 7.3, 10% glycerol
Preparation:	Recombinant protein was captured through anti-DDK affinity column followed by conventional chromatography steps.
Note:	For testing in cell culture applications, please filter before use. Note that you may experience some loss of protein during the filtration process.



[View online »](#)

Storage:	Store at -80°C.
Stability:	Stable for 12 months from the date of receipt of the product under proper storage and handling conditions. Avoid repeated freeze-thaw cycles.
RefSeq:	<a href="#">NP_001013858</a>
Locus ID:	8379
UniProt ID:	<a href="#">Q9Y6D9</a>
RefSeq Size:	2717
Cytogenetics:	7p22.3
RefSeq ORF:	2154
Synonyms:	MAD1; PIG9; TP53I9; TXBP181
Summary:	MAD1L1 is a component of the mitotic spindle-assembly checkpoint that prevents the onset of anaphase until all chromosome are properly aligned at the metaphase plate. MAD1L1 functions as a homodimer and interacts with MAD2L1. MAD1L1 may play a role in cell cycle control and tumor suppression. Alternative splicing results in multiple transcript variants. [provided by RefSeq, Jan 2015]
Protein Families:	Druggable Genome
Protein Pathways:	Cell cycle

### Product images:



Coomassie blue staining of purified MAD1L1 protein (Cat# [TP322718]). The protein was produced from HEK293T cells transfected with MAD1L1 cDNA clone (Cat# [RC222718]) using MegaTran 2.0 (Cat# [TT210002]).