

Product datasheet for **TP322698**

PKM2 (PKM) (NM_182471) Human Recombinant Protein

Product data:

Product Type:	Recombinant Proteins
Description:	Recombinant protein of human pyruvate kinase, muscle (PKM2), transcript variant 3, 20 µg
Species:	Human
Expression Host:	HEK293T
Expression cDNA Clone or AA Sequence:	>RC222698 representing NM_182471 Red =Cloning site Green =Tags(s)

MSKPHSEAGTAFIQ TQQLHAAMADTFLEHMCRLDIDSPITARN TGIICTIGPASRSVETLKEMIKSGMN
VARLNFSHGTHEYHAETIKNVRTATESFASDPILYRPVAVALDTKGPEIR TGLIKGSGTAEVELKKGATL
KITLDNAYMEKCDENILWLDYKNICKVVEVGSKIYVDDGLISLQVKQKGADFLVTEVENGGSLSGSKKGVN
LPGAAVDLPVSEKDIQDLKFGVEQDVDMVFASFIRKASDVHEVRKVLGEKGKNIKIISKIENHEGVRRF
DEILEASDGIMVARGDLGIEIPA EKVFLAQKMMIGRCNRAGKPVICATQMLESMIKKPRPTRAEGSDVAN
AVLDGADCIMLSGETAKGDYPLEAVRMQH IAREAEAAMFHRKLFEE LV RASSHSTDLMEAMAMGSVEAS
YKCLAAALIVLTESGRSAHQVARYRPRAPII AVTRNPQTARQAHL YRGIFPV LCKDPVQEAWAEDV LRV
NFAMNVGKARGFFKKGDVWIVLTGWRP GSGFTNTMRVVPV

TRTRPLEQKLISEEDLAANDILDYKDDDDKV

Tag:	C-Myc/DDK
Predicted MW:	57.9 kDa
Concentration:	>0.05 µg/µL as determined by microplate BCA method
Purity:	> 80% as determined by SDS-PAGE and Coomassie blue staining
Buffer:	25 mM Tris-HCl, 100 mM glycine, pH 7.3, 10% glycerol
Preparation:	Recombinant protein was captured through anti-DDK affinity column followed by conventional chromatography steps.
Note:	For testing in cell culture applications, please filter before use. Note that you may experience some loss of protein during the filtration process.
Storage:	Store at -80°C.
Stability:	Stable for 12 months from the date of receipt of the product under proper storage and handling conditions. Avoid repeated freeze-thaw cycles.



[View online >](#)

RefSeq: [NP_872271](#)

Locus ID: 5315

UniProt ID: [P14618](#)

RefSeq Size: 2498

Cytogenetics: 15q23

RefSeq ORF: 1593

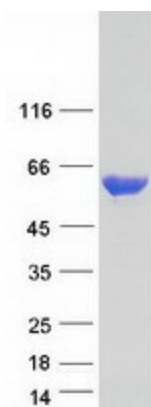
Synonyms: CTHBP; HEL-S-30; OIP3; p58; PK3; PKM2; TCB; THBP1

Summary: This gene encodes a protein involved in glycolysis. The encoded protein is a pyruvate kinase that catalyzes the transfer of a phosphoryl group from phosphoenolpyruvate to ADP, generating ATP and pyruvate. This protein has been shown to interact with thyroid hormone and may mediate cellular metabolic effects induced by thyroid hormones. This protein has been found to bind Opa protein, a bacterial outer membrane protein involved in gonococcal adherence to and invasion of human cells, suggesting a role of this protein in bacterial pathogenesis. Several alternatively spliced transcript variants encoding a few distinct isoforms have been reported. [provided by RefSeq, May 2011]

Protein Families: Druggable Genome

Protein Pathways: Glycolysis / Gluconeogenesis, Metabolic pathways, Purine metabolism, Pyruvate metabolism, Type II diabetes mellitus

Product images:



Coomassie blue staining of purified PKM protein (Cat# TP322698). The protein was produced from HEK293T cells transfected with PKM cDNA clone (Cat# [RC222698]) using MegaTran 2.0 (Cat# [TT210002]).