

## Product datasheet for **TP322697M**

### **KRAS (NM\_033360) Human Recombinant Protein**

#### **Product data:**

Product Type:	Recombinant Proteins
Description:	Recombinant protein of human v-Ki-ras2 Kirsten rat sarcoma viral oncogene homolog (KRAS), transcript variant a, 100 µg
Species:	Human
Expression Host:	HEK293T
Expression cDNA Clone or AA Sequence:	>RC222697 representing NM_033360 <b>Red</b> =Cloning site <b>Green</b> =Tags(s)

MTEYKLVVVGAGGVGKSALTIQLIQNHFVDEYDPTIEDSYRKQWIDGETCLLDILDITAGQEEYSAMRDQ  
YMRTGEGFLCVFAINNTKSFEDIHHYREQIKRVKDESDVPMVLVGNKCDLPSRTVDTKQAQDLARSYGIP  
FIETSAKTRQRVEDAFYTLVREIRQYRLKKISKEEKTGCVKIKKCIIM

**TRTRPLEQKLISEEDLAANDILDYKDDDDKV**

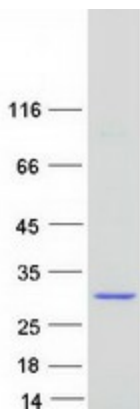
Tag:	C-Myc/DDK
Predicted MW:	21.5 kDa
Concentration:	>0.05 µg/µL as determined by microplate BCA method
Purity:	> 80% as determined by SDS-PAGE and Coomassie blue staining
Buffer:	25 mM Tris-HCl, 100 mM glycine, pH 7.3, 10% glycerol
Preparation:	Recombinant protein was captured through anti-DDK affinity column followed by conventional chromatography steps.
Note:	For testing in cell culture applications, please filter before use. Note that you may experience some loss of protein during the filtration process.
Storage:	Store at -80°C.
Stability:	Stable for 12 months from the date of receipt of the product under proper storage and handling conditions. Avoid repeated freeze-thaw cycles.
RefSeq:	<a href="#">NP_203524</a>
Locus ID:	3845
UniProt ID:	<a href="#">P01116</a> , <a href="#">L7RSL8</a> , <a href="#">I1SRC5</a>



[View online »](#)

RefSeq Size:	5436
Cytogenetics:	12p12.1
RefSeq ORF:	567
Synonyms:	C-K-RAS; c-Ki-ras2; CFC2; K-Ras; K-RAS2A; K-RAS2B; K-RAS4A; K-RAS4B; KI-RAS; KRAS1; KRAS2; NS; NS3; RALD; RASK2
Summary:	This gene, a Kirsten ras oncogene homolog from the mammalian ras gene family, encodes a protein that is a member of the small GTPase superfamily. A single amino acid substitution is responsible for an activating mutation. The transforming protein that results is implicated in various malignancies, including lung adenocarcinoma, mucinous adenoma, ductal carcinoma of the pancreas and colorectal carcinoma. Alternative splicing leads to variants encoding two isoforms that differ in the C-terminal region. [provided by RefSeq, Jul 2008]
Protein Families:	Druggable Genome
Protein Pathways:	Acute myeloid leukemia, Axon guidance, B cell receptor signaling pathway, Bladder cancer, Chemokine signaling pathway, Chronic myeloid leukemia, Colorectal cancer, Dorso-ventral axis formation, Endometrial cancer, ErbB signaling pathway, Fc epsilon RI signaling pathway, Gap junction, Glioma, GnRH signaling pathway, Insulin signaling pathway, Long-term depression, Long-term potentiation, MAPK signaling pathway, Melanogenesis, Melanoma, Natural killer cell mediated cytotoxicity, Neurotrophin signaling pathway, Non-small cell lung cancer, Pancreatic cancer, Pathways in cancer, Progesterone-mediated oocyte maturation, Prostate cancer, Regulation of actin cytoskeleton, Renal cell carcinoma, T cell receptor signaling pathway, Thyroid cancer, Tight junction, VEGF signaling pathway

### Product images:



Coomassie blue staining of purified KRAS protein (Cat# [TP322697]). The protein was produced from HEK293T cells transfected with KRAS cDNA clone (Cat# [RC222697]) using MegaTran 2.0 (Cat# [TT210002]).