

## Product datasheet for TP322666

### FSH beta (FSHB) (NM\_000510) Human Recombinant Protein

#### Product data:

Product Type:	Recombinant Proteins
Description:	Recombinant protein of human follicle stimulating hormone, beta polypeptide (FSHB), transcript variant 1, 20 µg
Species:	Human
Expression Host:	HEK293T
Expression cDNA Clone or AA Sequence:	>RC222666 protein sequence Red=Cloning site Green=Tags(s)
	MKTLQFFFLFCCWKAICCNSELTNITIAIEKEECRFCISINTTWCAGYCYTRDLVYKDPARPKIQKTCT FKELVYETVRVPGCAHHADSLYTPVATQCHCGKCDSDSTDCTVRGLGPSYCSFGEMKE
	TRTRPLEQKLISEEDLAANDILDYKDDDDKV
Tag:	C-Myc/DDK
Predicted MW:	12.4 kDa
Concentration:	>0.05 µg/µL as determined by microplate BCA method
Purity:	> 80% as determined by SDS-PAGE and Coomassie blue staining
Buffer:	25 mM Tris-HCl, 100 mM glycine, pH 7.3, 10% glycerol
Preparation:	Recombinant protein was captured through anti-DDK affinity column followed by conventional chromatography steps.
Note:	For testing in cell culture applications, please filter before use. Note that you may experience some loss of protein during the filtration process.
Storage:	Store at -80°C.
Stability:	Stable for 12 months from the date of receipt of the product under proper storage and handling conditions. Avoid repeated freeze-thaw cycles.
RefSeq:	<a href="#">NP_000501</a>
Locus ID:	2488
UniProt ID:	<a href="#">P01225</a> , <a href="#">A0A0F7RQE8</a>
RefSeq Size:	1936



[View online »](#)

Cytogenetics: 11p14.1

RefSeq ORF: 387

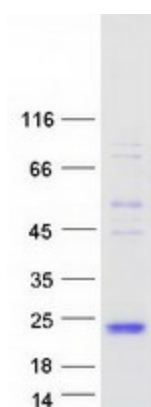
Synonyms: HH24

**Summary:** The pituitary glycoprotein hormone family includes follicle-stimulating hormone, luteinizing hormone, chorionic gonadotropin, and thyroid-stimulating hormone. All of these glycoproteins consist of an identical alpha subunit and a hormone-specific beta subunit. This gene encodes the beta subunit of follicle-stimulating hormone. In conjunction with luteinizing hormone, follicle-stimulating hormone induces egg and sperm production. Alternative splicing results in two transcript variants encoding the same protein. [provided by RefSeq, Jul 2008]

**Protein Families:** Druggable Genome, Secreted Protein

**Protein Pathways:** GnRH signaling pathway, Neuroactive ligand-receptor interaction

### Product images:



Coomassie blue staining of purified FSHB protein (Cat# TP322666). The protein was produced from HEK293T cells transfected with FSHB cDNA clone (Cat# [RC222666]) using MegaTran 2.0 (Cat# [TT210002]).