

Product datasheet for **TP322657M**

PKMYT1 (NM_004203) Human Recombinant Protein

Product data:

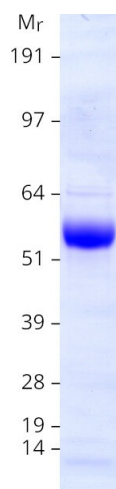
Product Type:	Recombinant Proteins
Description:	Recombinant protein of human protein kinase, membrane associated tyrosine/threonine 1 (PKMYT1), transcript variant 1, 100 µg
Species:	Human
Expression Host:	HEK293T
Expression cDNA Clone or AA Sequence:	>RC222657 representing NM_004203 Red =Cloning site Green =Tags(s) MLERPPALAMPMPTEGTTPPPLSGTPIPVPAYFRHAEPGFSLKRPRGLSRSLPPPPAKGSIPISRLFPPR TPGWHQLQPRRVSRGEASETLQSPGYDPSRPESFFQSFQRLSRLGHGSGYGEVFKVRSKEDGRLYAVKR SMSPFRGPKDRARKLAEVGSHEKVGQHPCCVRLEQAWEEGGILYLQTELCGPSLQQHCEAWGASLPEAQV WGYLRTLLALAHLSQGLVHLDVKPANIFLGRGRCKLGDFFLLVELGTAGAGEVQEGDPRYMAPELLQ GSYGTAADVFSLGLTILEVACNMELPHGGEGWQQLRQGYLPPEFTAGLSSELRSVLMMLEPDPKLRATA EALLALPVLQRPAWGVLWCMAAEALSRGWALWQALLALLCWLWHGLAHPASWLQPLGPPATPPGSPPCS LLLSSSLSSNWDDDSLGPSPSPEAVLARTVGGSTSTPRSRCTPRDALDLSINSEPPRGSFSPSEPRNLLS LFEDTLDPT TRTRPLEQKLISEEDLAANDILDYKDDDDKV
Tag:	C-Myc/DDK
Predicted MW:	54.3 kDa
Concentration:	>0.05 µg/µL as determined by microplate BCA method
Purity:	> 80% as determined by SDS-PAGE and Coomassie blue staining
Buffer:	25 mM Tris-HCl, 100 mM glycine, pH 7.3, 10% glycerol
Preparation:	Recombinant protein was captured through anti-DDK affinity column followed by conventional chromatography steps.
Note:	For testing in cell culture applications, please filter before use. Note that you may experience some loss of protein during the filtration process.
Storage:	Store at -80°C.



[View online »](#)

Stability:	Stable for 12 months from the date of receipt of the product under proper storage and handling conditions. Avoid repeated freeze-thaw cycles.
RefSeq:	NP_004194
Locus ID:	9088
UniProt ID:	Q99640 , Q0I149
RefSeq Size:	2121
Cytogenetics:	16p13.3
RefSeq ORF:	1497
Synonyms:	MYT1; PPP1R126
Summary:	This gene encodes a member of the serine/threonine protein kinase family. The encoded protein is a membrane-associated kinase that negatively regulates the G2/M transition of the cell cycle by phosphorylating and inactivating cyclin-dependent kinase 1. The activity of the encoded protein is regulated by polo-like kinase 1. Alternatively spliced transcript variants encoding multiple isoforms have been observed for this gene. [provided by RefSeq, May 2012]
Protein Families:	Druggable Genome, Protein Kinase
Protein Pathways:	Cell cycle, Oocyte meiosis, Progesterone-mediated oocyte maturation

Product images:



Coomassie blue staining of purified PKMYT1 protein (Cat# [TP322657]). The protein was produced from HEK293T cells transfected with PKMYT1 cDNA clone (Cat# [RC222657]) using MegaTran 2.0 (Cat# [TT210002]).