

## Product datasheet for **TP322657L**

### PKMYT1 (NM\_004203) Human Recombinant Protein

#### Product data:

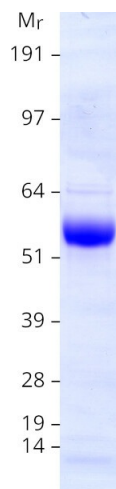
Product Type:	Recombinant Proteins
Description:	Recombinant protein of human protein kinase, membrane associated tyrosine/threonine 1 (PKMYT1), transcript variant 1, 1 mg
Species:	Human
Expression Host:	HEK293T
Expression cDNA Clone or AA Sequence:	>RC222657 representing NM_004203 <b>Red</b> =Cloning site <b>Green</b> =Tags(s)  MLERPPALAMPMPTEGTTPPPLSGTPIPVPAYFRHAEPGFSLKRPRGLSRSLPPPPAKGSIPISRLFPPR TPGWHQLQPRRVSRGEASETLQSPGYDPSRPESFFQSFQRLSRLGHGSGYGEVFKVRSKEDGRLYAVKR SMSFPRGPKDRARKLAEVGSHEKVGQHPCCVRLEQAWEEGGILYLQTELCGPSLQQHCEAWGASLPEAQV WGYLRTLLALAHLSQGLVHLDVKPANIFLGRGRCKLGDFFLLVELGTAGAGEVQEGDPRYMAPELLQ GSYGTAADVFSLGLTILEVACNMELPHGGEGWQQLRQGYLPPEFTAGLSSELRSVLMMLEPDPKLRATA EALLALPVLQRPAWGVLWCMAAEALSRGWALWQALLALLCWLWHGLAHPASWLQPLGPPATPPGSPPCS LLLDSLSNWDSDSLGPSLSPEAVLARTVGTSTPRSRCTPRDALDLSINSEPPRGSFSPSEPRNLLS LFEDTLDPT  <b>TRTRPLEQKLISEEDLAANDILDYKDDDDKV</b>
Tag:	C-Myc/DDK
Predicted MW:	54.3 kDa
Concentration:	>0.05 µg/µL as determined by microplate BCA method
Purity:	> 80% as determined by SDS-PAGE and Coomassie blue staining
Buffer:	25 mM Tris-HCl, 100 mM glycine, pH 7.3, 10% glycerol
Preparation:	Recombinant protein was captured through anti-DDK affinity column followed by conventional chromatography steps.
Note:	For testing in cell culture applications, please filter before use. Note that you may experience some loss of protein during the filtration process.
Storage:	Store at -80°C.



[View online »](#)

<b>Stability:</b>	Stable for 12 months from the date of receipt of the product under proper storage and handling conditions. Avoid repeated freeze-thaw cycles.
<b>RefSeq:</b>	<a href="#">NP_004194</a>
<b>Locus ID:</b>	9088
<b>UniProt ID:</b>	<a href="#">Q99640</a> , <a href="#">Q0I149</a>
<b>RefSeq Size:</b>	2121
<b>Cytogenetics:</b>	16p13.3
<b>RefSeq ORF:</b>	1497
<b>Synonyms:</b>	MYT1; PPP1R126
<b>Summary:</b>	This gene encodes a member of the serine/threonine protein kinase family. The encoded protein is a membrane-associated kinase that negatively regulates the G2/M transition of the cell cycle by phosphorylating and inactivating cyclin-dependent kinase 1. The activity of the encoded protein is regulated by polo-like kinase 1. Alternatively spliced transcript variants encoding multiple isoforms have been observed for this gene. [provided by RefSeq, May 2012]
<b>Protein Families:</b>	Druggable Genome, Protein Kinase
<b>Protein Pathways:</b>	Cell cycle, Oocyte meiosis, Progesterone-mediated oocyte maturation

### Product images:



Coomassie blue staining of purified PKMYT1 protein (Cat# [TP322657]). The protein was produced from HEK293T cells transfected with PKMYT1 cDNA clone (Cat# [RC222657]) using MegaTran 2.0 (Cat# [TT210002]).