

## Product datasheet for TP322603L

### LRR8C (NM\_032270) Human Recombinant Protein

#### Product data:

Product Type:	Recombinant Proteins
Description:	Recombinant protein of human leucine rich repeat containing 8 family, member C (LRR8C), 1 mg
Species:	Human
Expression Host:	HEK293T
Expression cDNA Clone or AA Sequence:	>RC222603 protein sequence Red=Cloning site Green=Tags(s)

MIPVTEFRQFSEQQPAFRVLKPWWVDVFTDYLSVAMLMIGVFGCTLQVMQDKIICLPKRVQPAQNHSSLSN  
VSQAVASTTPLPPPSPANPITVEMKGLKTDLDLQYSFQINQMCYERALHWYAKYFPYLVIHTLVFML  
CSNFWFKFPGSSKIEHFISILGKCFDSPWTRALSEVSGEDSEEKDNRNKNNMNRNTIQSGPEGSLVNS  
QSLKSIPEKFFVVDKSTAGALDKKEGEQAKALFEKVKKFRHLHVEEGDILYAMYVRQTVLKVIFLIIAYN  
SALVSKVQFTVDCNVDIQDMTGYKNFSCNHTMAHLFSKLSFCYLCFVSIYGLTCLYTLWLFYRSLREYS  
FEYVRQETGIDDIPDVKNDFAFMLHMIDQYDPLYSKRFVFLSEVSENKLNLNNEWTPDKLRQKLQT  
NAHNRLELPLIMLSGLPDTVFEITELQSLKLEIKNVMIPATIAQLDNLQELSLHQCSVKIHSAAALSFLK  
ENLKVLSVKFDDMRELPPWMYGLRNLEELYLVGSLSHDISRNVLTESLRDLKSLKILSIKSNVSKIPQAV  
VDVSSHLLQKMCIHNDGTKLVMLNLLKMTNLTELELVHCDLERIPHAVFSLLSLQELDLKENNLKSIEEI  
VSFQHLRKLTVLKLWHNSITYIPEHIKLTSLERLSFSHNKIEVLPShLFLCNKIRYLDLSYNDIRFIPP  
EIGVLQSLQYFSITCNKVESLPDELYFCKKLTkIGKNSLSVLSPKIGNLLFLSYLDVKGNHFEILPPE  
LGDCRALKRAGLVEDALFETLPSDVREQMKTE

TRTRPLEQKLISEEDLAANDILDYKDDDDKV

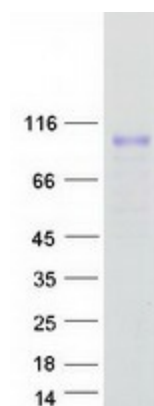
Tag:	C-Myc/DDK
Predicted MW:	92.2 kDa
Concentration:	>0.05 µg/µL as determined by microplate BCA method
Purity:	> 80% as determined by SDS-PAGE and Coomassie blue staining
Buffer:	25 mM Tris-HCl, 100 mM glycine, pH 7.3, 10% glycerol
Preparation:	Recombinant protein was captured through anti-DDK affinity column followed by conventional chromatography steps.



[View online »](#)

<b>Note:</b>	For testing in cell culture applications, please filter before use. Note that you may experience some loss of protein during the filtration process.
<b>Storage:</b>	Store at -80°C.
<b>Stability:</b>	Stable for 12 months from the date of receipt of the product under proper storage and handling conditions. Avoid repeated freeze-thaw cycles.
<b>RefSeq:</b>	<a href="#">NP_115646</a>
<b>Locus ID:</b>	84230
<b>UniProt ID:</b>	<a href="#">Q8TDW0</a>
<b>RefSeq Size:</b>	7207
<b>Cytogenetics:</b>	1p22.2
<b>RefSeq ORF:</b>	2409
<b>Synonyms:</b>	AD158; FAD158
<b>Summary:</b>	Non-essential component of the volume-regulated anion channel (VRAC, also named VSOAC channel), an anion channel required to maintain a constant cell volume in response to extracellular or intracellular osmotic changes. The VRAC channel conducts iodide better than chloride and can also conduct organic osmolytes like taurine. Plays a redundant role in the efflux of amino acids, such as aspartate and glutamate, in response to osmotic stress. Channel activity requires LRRC8A plus at least one other family member (LRRC8B, LRRC8C, LRRC8D or LRRC8E); channel characteristics depend on the precise subunit composition. [UniProtKB/Swiss-Prot Function]
<b>Protein Families:</b>	Transmembrane

### Product images:



Coomassie blue staining of purified LRRC8C protein (Cat# [TP322603]). The protein was produced from HEK293T cells transfected with LRRC8C cDNA clone (Cat# [RC222603]) using MegaTran 2.0 (Cat# [TT210002]).