

Product datasheet for TP322566

CTHF8 (NM_001039690) Human Recombinant Protein

Product data:

Product Type:	Recombinant Proteins
Description:	Recombinant protein of human CTF8, chromosome transmission fidelity factor 8 homolog (S. cerevisiae) (CTHF8), transcript variant 1, 20 µg
Species:	Human
Expression Host:	HEK293T
Expression cDNA Clone or AA Sequence:	>RC222566 protein sequence Red =Cloning site Green =Tags(s) MVQIVISSARAGGLAEWVLMELQGEIARYSTGLAGNLLGDLHYTTEGIPVLIVGHHILYGKIIHLEKPF AVLVKHTPGDQDCDELGRETGTRYLVLTALIKDKILFKTRPKPIITSVPKKV TRTRPLEQKLISEEDLAANDILDYKDDDDKV
Tag:	C-Myc/DDK
Predicted MW:	13.1 kDa
Concentration:	>0.05 µg/µL as determined by microplate BCA method
Purity:	> 80% as determined by SDS-PAGE and Coomassie blue staining
Buffer:	25 mM Tris-HCl, 100 mM glycine, pH 7.3, 10% glycerol
Preparation:	Recombinant protein was captured through anti-DDK affinity column followed by conventional chromatography steps.
Note:	For testing in cell culture applications, please filter before use. Note that you may experience some loss of protein during the filtration process.
Storage:	Store at -80°C.
Stability:	Stable for 12 months from the date of receipt of the product under proper storage and handling conditions. Avoid repeated freeze-thaw cycles.
RefSeq:	NP_001034779
Locus ID:	54921
UniProt ID:	P0CG13
RefSeq Size:	2934


[View online »](#)

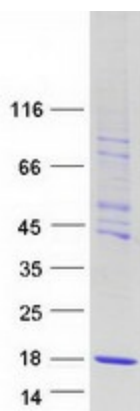
Cytogenetics: 16q22.1

RefSeq ORF: 363

Synonyms: CTF8; DERP

Summary: This gene encodes a short protein that forms part of the Ctf18 replication factor C (RFC) complex that occurs in both yeast and mammals. The heteroheptameric RFC complex plays a role in sister chromatid cohesion and may load the replication clamp PCNA (proliferating cell nuclear antigen) onto DNA during DNA replication and repair. This gene is ubiquitously expressed and has been shown to have reduced expression in renal and prostate tumors. Alternatively spliced transcript variants have been described. This gene has a pseudogene on chromosome X. [provided by RefSeq, Oct 2018]

Product images:



Coomassie blue staining of purified CHTF8 protein (Cat# TP322566). The protein was produced from HEK293T cells transfected with CHTF8 cDNA clone (Cat# [RC222566]) using MegaTran 2.0 (Cat# [TT210002]).