

## Product datasheet for TP322535

### LEPRE1 (P3H1) (NM\_022356) Human Recombinant Protein

#### Product data:

Product Type:	Recombinant Proteins
Description:	Recombinant protein of human leucine proline-enriched proteoglycan (leprecan) 1 (LEPRE1), 20 µg
Species:	Human
Expression Host:	HEK293T
Expression cDNA Clone or AA Sequence:	>RC222535 representing NM_022356 Red=Cloning site Green=Tags(s)

MAVRALKLLTLLAVVAAASQAEVESEAGWGMVTPDLLFAEGTAAYARGDWPGVLSMERALRSRAALRA  
LRLRCRTQCAADFPWELDPDWSPSPAQASGAAALRDLSEFFGGLLRRAACLRRCLGPPAAHSLSEMELEF  
RKRSYPNYLQVAYFKINKLEKAVAAAHTFFVGNPEHMEMQQLDYYQTMMSGVKEADFKDLETQPHMQEFR  
LGVRLYSEEQPQEAVPHLEAALQEYFVAYEECRALCEGPYDYDGYNYLEYNADLFQAITDHYIQVLNCKQ  
NCVTELAHPSREKPFEDFLPSHYNYLQFAYYNIGNYTQAVECAKTYLLFFPNDEVMNQNLAYYAAMLGE  
EHTRSIGPRESAKEYRQRSLLLEKELFFAYDVFVGFVDPDSWTPEEVIPKRLQEKQKSERETAVRISQE  
IGNLMKEIETLVEEKTESLDVSRITREGGPLLYEGISLTMNSKLLNGSQRVVMDGVISDHECQELQRLT  
NVAATSGDGYRGQTSPHTPNEKFGVTVFKALKLQEGKVPPLQSAHLYYVTEKVRRIIESYFRDLTPLY  
FSYSHLVCRTAIEEVQAERKDDSHPVHVDNLCILNAETLVCVKEPPAYTFRDYSAILYLNGDFDGGNFYFT  
ELDAKTVAEVQPQCGRVGFSSGTENPHGVKAVTRGQRCAIALWFTLDPHRSERDRVQADDLVKMLFSP  
EEMDLSQEQPLDAQGPPPEPAQESLSGSESKPKDEL

TRTRPLEQKLISEEDLAANDILDYKDDDDKV

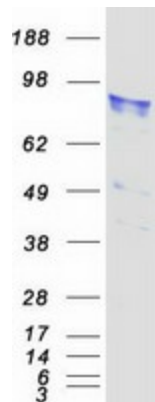
Tag:	C-Myc/DDK
Predicted MW:	83.2 kDa
Concentration:	>0.05 µg/µL as determined by microplate BCA method
Purity:	> 80% as determined by SDS-PAGE and Coomassie blue staining
Buffer:	25 mM Tris-HCl, 100 mM glycine, pH 7.3, 10% glycerol
Preparation:	Recombinant protein was captured through anti-DDK affinity column followed by conventional chromatography steps.
Note:	For testing in cell culture applications, please filter before use. Note that you may experience some loss of protein during the filtration process.



[View online »](#)

<b>Storage:</b>	Store at -80°C.
<b>Stability:</b>	Stable for 12 months from the date of receipt of the product under proper storage and handling conditions. Avoid repeated freeze-thaw cycles.
<b>RefSeq:</b>	<a href="#">NP_071751</a>
<b>Locus ID:</b>	64175
<b>UniProt ID:</b>	<a href="#">Q32P28</a>
<b>RefSeq Size:</b>	2993
<b>Cytogenetics:</b>	1p34.2
<b>RefSeq ORF:</b>	2208
<b>Synonyms:</b>	GROS1; LEPRE1; OI8
<b>Summary:</b>	This gene encodes an enzyme that is a member of the collagen prolyl hydroxylase family. These enzymes are localized to the endoplasmic reticulum and their activity is required for proper collagen synthesis and assembly. Mutations in this gene are associated with osteogenesis imperfecta type VIII. Three alternatively spliced transcript variants encoding different isoforms have been described. Other variants may exist, but their biological validity has not been determined. [provided by RefSeq, Aug 2011]
<b>Protein Families:</b>	Secreted Protein

### Product images:



Coomassie blue staining of purified P3H1 protein (Cat# TP322535). The protein was produced from HEK293T cells transfected with P3H1 cDNA clone (Cat# [RC222535]) using MegaTran 2.0 (Cat# [TT210002]).