

## Product datasheet for **TP322527L**

### MSMP (NM\_001044264) Human Recombinant Protein

#### Product data:

Product Type:	Recombinant Proteins
Description:	Recombinant protein of human microseminoprotein, prostate associated (MSMP), 1 mg
Species:	Human
Expression Host:	HEK293T
Expression cDNA Clone or AA Sequence:	>RC222527 representing NM_001044264 <b>Red</b> =Cloning site <b>Green</b> =Tags(s)
	 MALRMLWAGQAKGILGGWGIICLVMSLLLQHPGVYSKCYFQAQAPCHYEGKYFTLGESWLRKDCFHCTCL HPVGVGCCDTSQHPIDFPAGCEVRQEAGTCQFSLVQKSDPRLPCKGGGPDPEWGSANTPVPGAPAPHSS  <b>TRTRPLEQKLISEEDLAANDILDYKDDDDKV</b>
Tag:	C-Myc/DDK
Predicted MW:	11.1 kDa
Concentration:	>0.05 µg/µL as determined by microplate BCA method
Purity:	> 80% as determined by SDS-PAGE and Coomassie blue staining
Buffer:	25 mM Tris-HCl, 100 mM glycine, pH 7.3, 10% glycerol
Bioactivity:	Cell treatment (PMID: <a href="#">29059175</a> )
Preparation:	Recombinant protein was captured through anti-DDK affinity column followed by conventional chromatography steps.
Note:	For testing in cell culture applications, please filter before use. Note that you may experience some loss of protein during the filtration process.
Storage:	Store at -80°C.
Stability:	Stable for 12 months from the date of receipt of the product under proper storage and handling conditions. Avoid repeated freeze-thaw cycles.
RefSeq:	<a href="#">NP_001037729</a>
Locus ID:	692094
UniProt ID:	<a href="#">Q1L6U9</a>
RefSeq Size:	672



[View online »](#)

Cytogenetics: 9p13.3

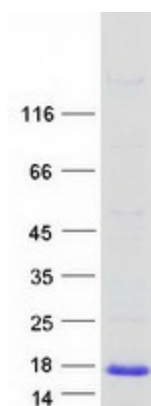
RefSeq ORF: 417

Synonyms: PSMP

**Summary:** This gene encodes a member of the beta-microseminoprotein family. Members of this protein family contain ten conserved cysteine residues that form intra-molecular disulfide bonds. The encoded protein may play a role in prostate cancer tumorigenesis. [provided by RefSeq, Jan 2011]

**Protein Families:** Transmembrane

### Product images:



Coomassie blue staining of purified MSMP protein (Cat# [TP322527]). The protein was produced from HEK293T cells transfected with MSMP cDNA clone (Cat# [RC222527]) using MegaTran 2.0 (Cat# [TT210002]).