

## Product datasheet for TP322513

### ATG9A (NM\_024085) Human Recombinant Protein

#### Product data:

Product Type:	Recombinant Proteins
Description:	Recombinant protein of human ATG9 autophagy related 9 homolog A ( <i>S. cerevisiae</i> ) (ATG9A), transcript variant 2, 20 µg
Species:	Human
Expression Host:	HEK293T
Expression cDNA Clone or AA Sequence:	>RC222513 representing NM_024085 Red=Cloning site Green=Tags(s)

MAQFDTEYQRLEASYSDSPGEEEDLLVHVAEGSKSPWHHIENLDLFFSRVYNLHQKNGFTCMLIGEIFEL  
MQFLFVVAFTTFLVSCVDYDILFANKMVNHS LHPTPEVKVTLPD AFLPAQVCSARIQENGLITILVIAG  
VFWIHRLIKFIYNICCYWEIHSFYLHALRIPMSALPYCTWQEVQARIVQTQKEHQICIHKRELTELDIYH  
RILRFQNYMVALVNKSLPLRFRPLGLGEAVFFTRGLKYNFELILFWGPGSLFLNEWSLKAEYKRGGQRL  
ELAQRLSNRILWIGIANFLLCPLILWQILYAFFSYAEVLKREPGALGARCWSLYGRCYLRHFNELEHEL  
QSRLNRGYKPASKYMNCFLSPLLTLAKNGAFFAGSILAVLI ALTIYDEDVLAVEHVLTTVTL LGVTVTV  
CRSFIPDQHMVFCPEQLLRVILAHIHMPDHWQGN AHRSQTRDEFAQLFQYKAVFILEELLSPIVTPLIL  
IFCLRPRALEIIDFFRNFTVEVVGVDTC SFAQMDVRQHGHPQWLSAGQTEASVYQQAEDGKTELSLMHF  
AITNPGWQPPRESTAFLGFLKEQVQRDGA AASLAQGGLLPENALFTSIQSLQSESEPLSIANVWAGSSC  
RGPPLPRDLQGSRHRAEVASALRSFSPLQPGQAPTGRAHSTMTGSGVDARTASSGSSVWEGQLQSLVLSE  
YASTEMSLHALYMHQLHKQQAQAEPERHVWHRRESDESGESAPDEGGEGARAPQSIPRSASYPCAAPRPG  
APETTALHGGFQRRYGGITDPGTVPRVPSHFSRLPLGGWAEDGQSASRHPEPVPEEGSEDELPPQVHKV

TRTRPLEQKLISEEDLAANDILDYKDDDDKV

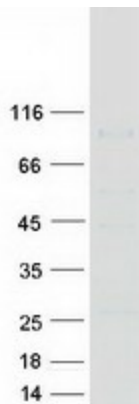
Tag:	C-Myc/DDK
Predicted MW:	94.3 kDa
Concentration:	>0.05 µg/µL as determined by microplate BCA method
Purity:	> 80% as determined by SDS-PAGE and Coomassie blue staining
Buffer:	25 mM Tris-HCl, 100 mM glycine, pH 7.3, 10% glycerol
Preparation:	Recombinant protein was captured through anti-DDK affinity column followed by conventional chromatography steps.



[View online »](#)

<b>Note:</b>	For testing in cell culture applications, please filter before use. Note that you may experience some loss of protein during the filtration process.
<b>Storage:</b>	Store at -80°C.
<b>Stability:</b>	Stable for 12 months from the date of receipt of the product under proper storage and handling conditions. Avoid repeated freeze-thaw cycles.
<b>RefSeq:</b>	<a href="#">NP_076990</a>
<b>Locus ID:</b>	79065
<b>UniProt ID:</b>	<a href="#">Q7Z3C6</a> , <a href="#">A0A024R438</a>
<b>RefSeq Size:</b>	3816
<b>Cytogenetics:</b>	2q35
<b>RefSeq ORF:</b>	2517
<b>Synonyms:</b>	APG9L1; mATG9; MGD3208
<b>Summary:</b>	Involved in autophagy and cytoplasm to vacuole transport (Cvt) vesicle formation. Plays a key role in the organization of the preautophagosomal structure/phagophore assembly site (PAS), the nucleating site for formation of the sequestering vesicle. Cycles between a juxta-nuclear trans-Golgi network compartment and late endosomes. Nutrient starvation induces accumulation on autophagosomes. Starvation-dependent trafficking requires ULK1, ATG13 and SUPT20H.[UniProtKB/Swiss-Prot Function]
<b>Protein Families:</b>	Transmembrane

### Product images:



Coomassie blue staining of purified ATG9A protein (Cat# TP322513). The protein was produced from HEK293T cells transfected with ATG9A cDNA clone (Cat# [RC222513]) using MegaTran 2.0 (Cat# [TT210002]).