

Product datasheet for **TP322477M**

GTSF1L (NM_001008901) Human Recombinant Protein

Product data:

Product Type:	Recombinant Proteins
Description:	Recombinant protein of human gametocyte specific factor 1-like (GTSF1L), transcript variant 2, 100 µg
Species:	Human
Expression Host:	HEK293T
Expression cDNA Clone or AA Sequence:	>RC222477 representing NM_001008901 Red =Cloning site Green =Tags(s)

MEPEAFEICPYDPHHRIPLSRFQYHLASCRRKNPKKAKKMATCKYNACHVVPKLNLEEHEAVCVNRS
AVEEEDTENPLKVSPSPSEQNDDTQQTFFPQKVCENDTKESARETSPQKILRPGQ

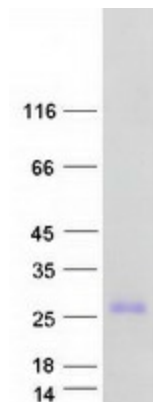
TRTRPLEQKLISEEDLAANDILDYKDDDDKV

Tag:	C-Myc/DDK
Predicted MW:	14 kDa
Concentration:	>0.05 µg/µL as determined by microplate BCA method
Purity:	> 80% as determined by SDS-PAGE and Coomassie blue staining
Buffer:	25 mM Tris-HCl, 100 mM glycine, pH 7.3, 10% glycerol
Preparation:	Recombinant protein was captured through anti-DDK affinity column followed by conventional chromatography steps.
Note:	For testing in cell culture applications, please filter before use. Note that you may experience some loss of protein during the filtration process.
Storage:	Store at -80°C.
Stability:	Stable for 12 months from the date of receipt of the product under proper storage and handling conditions. Avoid repeated freeze-thaw cycles.
RefSeq:	NP_001008901
Locus ID:	149699
UniProt ID:	Q9H1H1
RefSeq Size:	773



[View online »](#)

Cytogenetics: 20q13.12
RefSeq ORF: 369
Synonyms: C20orf65; dj1028D15.4; FAM112A

Product images:

Coomassie blue staining of purified GTSF1L protein (Cat# [TP322477]). The protein was produced from HEK293T cells transfected with GTSF1L cDNA clone (Cat# [RC222477]) using MegaTran 2.0 (Cat# [TT210002]).