

Product datasheet for **TP322456L**

GIP (NM_004123) Human Recombinant Protein

Product data:

Product Type:	Recombinant Proteins
Description:	Recombinant protein of human gastric inhibitory polypeptide (GIP), 1 mg
Species:	Human
Expression Host:	HEK293T
Expression cDNA Clone or AA Sequence:	>RC222456 protein sequence Red =Cloning site Green =Tags(s)
	 MVATKTFALLLLSLFLAVGLGEKKEGHFSALPSLPVGS HAKVSSPQPRGPRYAEGTFISDYSIAMDKIHQ QDFVNWLLAQKGGKNDWKHNITQREARALELAGQANRKEEEAVEPQSSPAKNPSDEDLLRDL LIQELLAC LLDQTNLCRLRSR
	 TR TRPLEQKLISEEDLAANDILDYKDDDDKV
Tag:	C-Myc/DDK
Predicted MW:	4.9 kDa
Concentration:	>0.05 µg/µL as determined by microplate BCA method
Purity:	> 80% as determined by SDS-PAGE and Coomassie blue staining
Buffer:	25 mM Tris-HCl, 100 mM glycine, pH 7.3, 10% glycerol
Preparation:	Recombinant protein was captured through anti-DDK affinity column followed by conventional chromatography steps.
Note:	For testing in cell culture applications, please filter before use. Note that you may experience some loss of protein during the filtration process.
Storage:	Store at -80°C.
Stability:	Stable for 12 months from the date of receipt of the product under proper storage and handling conditions. Avoid repeated freeze-thaw cycles.
RefSeq:	NP_004114
Locus ID:	2695
UniProt ID:	P09681
RefSeq Size:	711



[View online »](#)

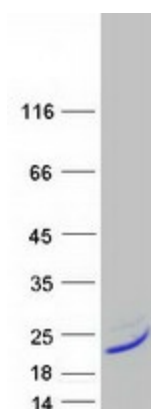
Cytogenetics: 17q21.32

RefSeq ORF: 459

Summary: This gene encodes an incretin hormone and belongs to the glucagon superfamily. The encoded protein is important in maintaining glucose homeostasis as it is a potent stimulator of insulin secretion from pancreatic beta-cells following food ingestion and nutrient absorption. This gene stimulates insulin secretion via its G protein-coupled receptor activation of adenylyl cyclase and other signal transduction pathways. It is a relatively poor inhibitor of gastric acid secretion. [provided by RefSeq, Jul 2008]

Protein Families: Druggable Genome, Secreted Protein

Product images:



Coomassie blue staining of purified GIP protein (Cat# [TP322456]). The protein was produced from HEK293T cells transfected with GIP cDNA clone (Cat# [RC222456]) using MegaTran 2.0 (Cat# [TT210002]).