

Product datasheet for TP322425M

Synphilin 1 (SNCAIP) (NM_005460) Human Recombinant Protein

Product data:

Product Type:	Recombinant Proteins
Description:	Recombinant protein of human synuclein, alpha interacting protein (SNCAIP), 100 µg
Species:	Human
Expression Host:	HEK293T
Expression cDNA Clone or AA Sequence:	>RC222425 representing NM_005460 Red=Cloning site Green=Tags(s)

MEAPEYLDLDEIDFSDDISYSVTSLKTIPELCRRCDTQNEEDRSVSSSSWNCGISTLITNTQKPTGIADV
SKFRPVKRVSPKHKQPETLENNESDDQKNQKVVVEYQKGGESDLGPQPQELGPGDVGVPKSSSEPTSL
GELEHYDLDMDEILDVPYIKSSQQLASFTKVTSEKRILGLCTTINGLSGKACSTGSSESSSSNMAPFCVL
SPVKSPHLRKASAVIHDQHKLSTEETEISPLVKCGSAYEPENQSKDFLNKTFSDPHGRKVEKTPDCQL
RAFHLQSSAAESKPEEQVSGLNRTSSQGPEERSEYLKVKVKSILNIVKEGQISLLPHLAADNLDKIHDENG
NNLLHIAASQGHAECLQHLTSLMGEDCLNERNTEKLTAPGLAIKNGQLECVRWMVSETEAIAELSCSKDF
PSLIHYAGCYGQEKILLWLLQFMQEQQISLDEVDQDGN SAVHVASQHG YLGC IQTLVEYGANVTM QNHAG
EKPSQSAERQGHTLCSRYLVVETCMSLASQVVKLTKQLKEQTVERTLQNQLQFLEAQKSEKSLPSS
PSSPSSPASRKSQWKSPDADDDSVAKSKPGVQEGIQVLGSL SASSRARP KAKDESDKILRQLLGKEISE
NVCTQEKLSLEFQDAQASSRNSKKIPEKRELKRLARLQMLQRSLSESDTDSNNS EDPK TTPVRKADRPR
PQPIVESVESMDSAESLHLMIKKHTLASGGRRFPFSIKASKSLDGHSPTSSESSEPDLESQYPGSGSIP
PNQPSGDPQQPSPDSTAAQKVATSPKSALKSPSSKRRTSQNLKLRVTFEPPVQMEQPSLELNGEKDKDK
GRTLQRTSTSNESGDQLKRPFGAFRSIMETLSGNQNNNNNYQAANQLKTSTLPLTSLGRKTDKGNPASS
ASKGKNKAA

TRTRPLEQKLISEEDLAANDILDYKDDDDKV

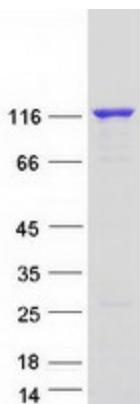
Tag:	C-Myc/DDK
Predicted MW:	100.2 kDa
Concentration:	>0.05 µg/µL as determined by microplate BCA method
Purity:	> 80% as determined by SDS-PAGE and Coomassie blue staining
Buffer:	25 mM Tris-HCl, 100 mM glycine, pH 7.3, 10% glycerol
Preparation:	Recombinant protein was captured through anti-DDK affinity column followed by conventional chromatography steps.



[View online »](#)

Note:	For testing in cell culture applications, please filter before use. Note that you may experience some loss of protein during the filtration process.
Storage:	Store at -80°C.
Stability:	Stable for 12 months from the date of receipt of the product under proper storage and handling conditions. Avoid repeated freeze-thaw cycles.
RefSeq:	NP_005451
Locus ID:	9627
UniProt ID:	Q9Y6H5
RefSeq Size:	3569
Cytogenetics:	5q23.2
RefSeq ORF:	2757
Synonyms:	Sph1; SYPH1
Summary:	This gene encodes a protein containing several protein-protein interaction domains, including ankyrin-like repeats, a coiled-coil domain, and an ATP/GTP-binding motif. The encoded protein interacts with alpha-synuclein in neuronal tissue and may play a role in the formation of cytoplasmic inclusions and neurodegeneration. A mutation in this gene has been associated with Parkinson's disease. Alternative splicing results in multiple transcript variants. [provided by RefSeq, Apr 2015]
Protein Pathways:	Parkinson's disease

Product images:



Coomassie blue staining of purified SNCAIP protein (Cat# [TP322425]). The protein was produced from HEK293T cells transfected with SNCAIP cDNA clone (Cat# [RC222425]) using MegaTran 2.0 (Cat# [TT210002]).