

## Product datasheet for TP322425

### Synphilin 1 (SNCAIP) (NM\_005460) Human Recombinant Protein

#### Product data:

Product Type:	Recombinant Proteins
Description:	Recombinant protein of human synuclein, alpha interacting protein (SNCAIP), 20 µg
Species:	Human
Expression Host:	HEK293T
Expression cDNA Clone or AA Sequence:	>RC222425 representing NM_005460 Red=Cloning site Green=Tags(s)

MEAPEYLDLDEIDFSDDISYSVTSCLKTIPELCRRCDTQNEEDRSVSSSSWNCGISTLITNTQKPTGIADV  
SKFRPVKRVSPKHKQPETLENNESDDQKNQKVEYQKGGESDLGPQPQELGPGDVGVPKSSSEPTSL  
GELEHYDLDMDEILDVPYIKSSQQLASFTKVTSEKRILGLCTTINGLSGKACSTGSSESSSNMAPFCVL  
SPVKSPHLRKASAVIHDQHKLSTEETEISPLVKCGSAYEPENQSKDFLNKTFSDPHGRKVEKTPDCQL  
RAFHLQSSAAESKPEEQVSGLNRTSSQGPEERSEYLKVKVKSILNIVKEGQISLLPHLAADNLDKIHDENG  
NNLLHIAASQGHAECLQHLTSLMGEDCLNERNTEKLTAPGLAIKNGQLECVRWMVSETEAIAELSCSKDF  
PSLIHYAGCYGQEKILLWLLQFMQEQQISLDEVDQDGN SAVHVASQHG YLGC IQTLVEYGANVTMQNHAG  
EKPSQSAERQGHTLCSRYLVVETCMSLASQVVKLTKQLKEQTVERTLQNLQQLQFLEAQKSEKSLPSS  
PSSPSSPASRKSQWKSPDADDDSVAKSKPGVQEGIQVLGSL SASSRARP KAKDESDKILRQLLGKEISE  
NVCTQEKLSLEFQDAQASSRNSKKIPEKRELKLARLRLMQRSLSES DTD SNNSEDPKTTTPVRKADRPR  
PQPIVESVESMDSAESLHLMIKKHTLASGGRRFPFSIKASKSLDGHSPTSSESSEPDLESQYPGSGSIP  
PNQPSGDPQQPSPDSTAAQKVATSPKSALKSPSSKRRTSQNLKLRVTFEPPVQMEQPSLELNGEKDKDK  
GRTLQRTSTSNESGDQLKRPFGAFRSIMETLSGNQNNNNNYQAANQLKTSTLPLTSLGRKTDKGNPASS  
ASKGKNKAA

TRTRPLEQKLISEEDLAANDILDYKDDDDKV

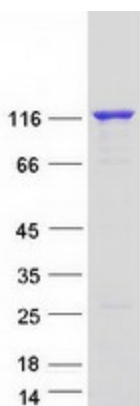
Tag:	C-Myc/DDK
Predicted MW:	100.2 kDa
Concentration:	>0.05 µg/µL as determined by microplate BCA method
Purity:	> 80% as determined by SDS-PAGE and Coomassie blue staining
Buffer:	25 mM Tris-HCl, 100 mM glycine, pH 7.3, 10% glycerol
Preparation:	Recombinant protein was captured through anti-DDK affinity column followed by conventional chromatography steps.



[View online »](#)

<b>Note:</b>	For testing in cell culture applications, please filter before use. Note that you may experience some loss of protein during the filtration process.
<b>Storage:</b>	Store at -80°C.
<b>Stability:</b>	Stable for 12 months from the date of receipt of the product under proper storage and handling conditions. Avoid repeated freeze-thaw cycles.
<b>RefSeq:</b>	<a href="#">NP_005451</a>
<b>Locus ID:</b>	9627
<b>UniProt ID:</b>	<a href="#">Q9Y6H5</a>
<b>RefSeq Size:</b>	3569
<b>Cytogenetics:</b>	5q23.2
<b>RefSeq ORF:</b>	2757
<b>Synonyms:</b>	Sph1; SYPH1
<b>Summary:</b>	This gene encodes a protein containing several protein-protein interaction domains, including ankyrin-like repeats, a coiled-coil domain, and an ATP/GTP-binding motif. The encoded protein interacts with alpha-synuclein in neuronal tissue and may play a role in the formation of cytoplasmic inclusions and neurodegeneration. A mutation in this gene has been associated with Parkinson's disease. Alternative splicing results in multiple transcript variants. [provided by RefSeq, Apr 2015]
<b>Protein Pathways:</b>	Parkinson's disease

### Product images:



Coomassie blue staining of purified SNCAIP protein (Cat# TP322425). The protein was produced from HEK293T cells transfected with SNCAIP cDNA clone (Cat# [RC222425]) using MegaTran 2.0 (Cat# [TT210002]).