

Product datasheet for **TP322406M**

CHKL (CHKB) (NM_152253) Human Recombinant Protein

Product data:

Product Type: Recombinant Proteins

Description: Recombinant protein of human choline kinase beta (CHKB), transcript variant 2, 100 µg

Species: Human

Expression Host: HEK293T

Expression cDNA Clone >RC222406 representing NM_152253

or AA Sequence: **Red**=Cloning site **Green**=Tags(s)

MAAEATAVAGSGAVGGCLAKDGLQQSKCPDTPKRRRASSLSRDAERRAYQWCREYLGGAWRRVQPEELR
VYPVRWEVRGQPLRCADRGQGSAAGPSGCSMFSPSCARAWGGAGPAWPGGGRGRGR

TRTRPLEQKLISEEDLAANDILDYKDDDDKV

Tag: C-Myc/DDK

Predicted MW: 13.3 kDa

Concentration: >0.05 µg/µL as determined by microplate BCA method

Purity: > 80% as determined by SDS-PAGE and Coomassie blue staining

Buffer: 25 mM Tris-HCl, 100 mM glycine, pH 7.3, 10% glycerol

Preparation: Recombinant protein was captured through anti-DDK affinity column followed by conventional chromatography steps.

Note: For testing in cell culture applications, please filter before use. Note that you may experience some loss of protein during the filtration process.

Storage: Store at -80°C.

Stability: Stable for 12 months from the date of receipt of the product under proper storage and handling conditions. Avoid repeated freeze-thaw cycles.

RefSeq: [NP_689466](#)

Locus ID: 1120

UniProt ID: [Q9Y259](#)

RefSeq Size: 4914

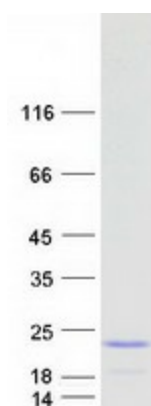
Cytogenetics: 22q13.33



[View online »](#)

RefSeq ORF:	381
Synonyms:	CHETK; CHKL; choline/ethanolamine kinase; choline kinase-like; choline kinase beta; CKEKB; EKB
Summary:	Choline kinase (CK) and ethanolamine kinase (EK) catalyze the phosphorylation of choline/ethanolamine to phosphocholine/phosphoethanolamine. This is the first enzyme in the biosynthesis of phosphatidylcholine/phosphatidylethanolamine in all animal cells. The highly purified CKs from mammalian sources and their recombinant gene products have been shown to have EK activity also, indicating that both activities reside on the same protein. The choline kinase-like protein encoded by CHKL belongs to the choline/ethanolamine kinase family; however, its exact function is not known. Read-through transcripts are expressed from this locus that include exons from the downstream CPT1B locus. [provided by RefSeq, Jun 2009]
Protein Families:	Druggable Genome
Protein Pathways:	Glycerophospholipid metabolism, Metabolic pathways

Product images:



Coomassie blue staining of purified CHKB protein (Cat# [TP322406]). The protein was produced from HEK293T cells transfected with CHKB cDNA clone (Cat# [RC222406]) using MegaTran 2.0 (Cat# [TT210002]).