

## Product datasheet for **TP322406L**

### CHKL (CHKB) (NM\_152253) Human Recombinant Protein

#### Product data:

**Product Type:** Recombinant Proteins

**Description:** Recombinant protein of human choline kinase beta (CHKB), transcript variant 2, 1 mg

**Species:** Human

**Expression Host:** HEK293T

**Expression cDNA Clone or AA Sequence:** >RC222406 representing NM\_152253

**Red**=Cloning site **Green**=Tags(s)

MAAEATAVAGSGAVGGCLAQDGLQQSKCPDTPKRRRASSLSRDAERRAYQWCREYLGGAWRRVQPEELR  
VYPVRWEVRGQPLRCADRGQGSAAAGPSGCSMFSPSCARAWGGAGPAWPGGGRGRGR

**TRTRPLEQKLISEEDLAANDILDYKDDDDKV**

**Tag:** C-Myc/DDK

**Predicted MW:** 13.3 kDa

**Concentration:** >0.05 µg/µL as determined by microplate BCA method

**Purity:** > 80% as determined by SDS-PAGE and Coomassie blue staining

**Buffer:** 25 mM Tris-HCl, 100 mM glycine, pH 7.3, 10% glycerol

**Preparation:** Recombinant protein was captured through anti-DDK affinity column followed by conventional chromatography steps.

**Note:** For testing in cell culture applications, please filter before use. Note that you may experience some loss of protein during the filtration process.

**Storage:** Store at -80°C.

**Stability:** Stable for 12 months from the date of receipt of the product under proper storage and handling conditions. Avoid repeated freeze-thaw cycles.

**RefSeq:** [NP\\_689466](#)

**Locus ID:** 1120

**UniProt ID:** [Q9Y259](#)

**RefSeq Size:** 4914

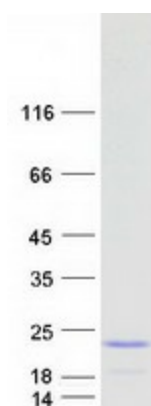
**Cytogenetics:** 22q13.33



[View online »](#)

RefSeq ORF:	381
Synonyms:	CHETK; CHKL; choline/ethanolamine kinase; choline kinase-like; choline kinase beta; CKEKB; EKB
Summary:	Choline kinase (CK) and ethanolamine kinase (EK) catalyze the phosphorylation of choline/ethanolamine to phosphocholine/phosphoethanolamine. This is the first enzyme in the biosynthesis of phosphatidylcholine/phosphatidylethanolamine in all animal cells. The highly purified CKs from mammalian sources and their recombinant gene products have been shown to have EK activity also, indicating that both activities reside on the same protein. The choline kinase-like protein encoded by CHKL belongs to the choline/ethanolamine kinase family; however, its exact function is not known. Read-through transcripts are expressed from this locus that include exons from the downstream CPT1B locus. [provided by RefSeq, Jun 2009]
Protein Families:	Druggable Genome
Protein Pathways:	Glycerophospholipid metabolism, Metabolic pathways

### Product images:



Coomassie blue staining of purified CHKB protein (Cat# [TP322406]). The protein was produced from HEK293T cells transfected with CHKB cDNA clone (Cat# [RC222406]) using MegaTran 2.0 (Cat# [TT210002]).