

Product datasheet for **TP322399L**

DLL1 (NM_005618) Human Recombinant Protein

Product data:

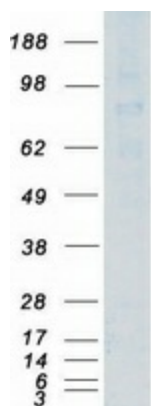
Product Type:	Recombinant Proteins
Description:	Recombinant protein of human delta-like 1 (Drosophila) (DLL1), 1 mg
Species:	Human
Expression Host:	HEK293T
Expression cDNA Clone or AA Sequence:	>RC222399 representing NM_005618 Red =Cloning site Green =Tags(s)
	MGSRCALALAVLSALLCQVWSSGVFELKLQEFVNKKGLLGNRNCCRGGAGPPPCACRTFFRVCLKHYQAS VSPEPPCTYGSVAVTPVLGVDLSFSLPDGGGADSAFNSPIRFPFGFTWPGTFLIIEALHTDSPDDLATENP ERLISRLATQRHLTVGEEWSQDLHSSGRTDLKYSYRFVCDHYGEGCSVFCRPRDDAFGHFTCGERGEK VCNPGWKGPYCTEPICLPGCDEQHGFCDKPGECKCRVWQGRYCDECIRYPGCLHGTCQQPWQCNCQEGW GGLFCNQDLNYCTHHKPKNGATCTNTGQGSYTCSCRPGYTGATCELGIDECDPSPCKNGGSCTDLENSY SCTCPPGFYGGKICELSAMTCADGPCFNGGRCS DSPDGGYSCRCVPVGYSGFNCEKKIDYCSSSPCSNGAKC VDLGDAYLCRCQAGFSGRHCDDNVDDCASSPCANGGTCRDGVNDFSCTCPGGYTGRNCSAPVSRCEHAPC HNGATCHERGHRYVCECARGYGGPNCQFLLPELPPGPAVVDLTKLEGQGGPPWWAVCAGVILVLMILL GCAAVVVCVRLRLQKHRPPADPCRGETETMNNLANCQREKDISVSIIGATQIKNTNKKADFDHSDADKN DFKARYPAVDYNLVQDLKGD DTA VRDAHSKRDTKCQPQGGSSGEEKGTP TLRGGEASERKRPDSGCSTSK DTKYQSVYVISEEKDECVIATEV
	TRTRPLEQKLISEEDLAANDILDYKDDDDKV
Tag:	C-Myc/DDK
Predicted MW:	77.9 kDa
Concentration:	>0.05 µg/µL as determined by microplate BCA method
Purity:	> 80% as determined by SDS-PAGE and Coomassie blue staining
Buffer:	25 mM Tris-HCl, 100 mM glycine, pH 7.3, 10% glycerol
Preparation:	Recombinant protein was captured through anti-DDK affinity column followed by conventional chromatography steps.
Note:	For testing in cell culture applications, please filter before use. Note that you may experience some loss of protein during the filtration process.
Storage:	Store at -80°C.



[View online »](#)

Stability:	Stable for 12 months from the date of receipt of the product under proper storage and handling conditions. Avoid repeated freeze-thaw cycles.
RefSeq:	NP_005609
Locus ID:	28514
UniProt ID:	O00548 , A0A384P5C6
RefSeq Size:	3366
Cytogenetics:	6q27
RefSeq ORF:	2169
Synonyms:	Delta; DELTA1; DL1; NEDBAS
Summary:	DLL1 is a human homolog of the Notch Delta ligand and is a member of the delta/serrate/jagged family. It plays a role in mediating cell fate decisions during hematopoiesis. It may play a role in cell-to-cell communication. [provided by RefSeq, Jul 2008]
Protein Families:	Adult stem cells, Cancer stem cells, ES Cell Differentiation/IPS, Stem cell relevant signaling - DSL/Notch pathway, Transmembrane
Protein Pathways:	Notch signaling pathway

Product images:



Coomassie blue staining of purified DLL1 protein (Cat# [TP322399]). The protein was produced from HEK293T cells transfected with DLL1 cDNA clone (Cat# [RC222399]) using MegaTran 2.0 (Cat# [TT210002]).