

Product datasheet for **TP322399**

DLL1 (NM_005618) Human Recombinant Protein

Product data:

Product Type: Recombinant Proteins
Description: Recombinant protein of human delta-like 1 (Drosophila) (DLL1), 20 µg
Species: Human
Expression Host: HEK293T
Expression cDNA Clone or AA Sequence: >RC222399 representing NM_005618
Red=Cloning site **Green**=Tags(s)

MGSRCALALAVLSALLCQVWSSGVFELKLQEFVNKKGLLGNRNCCRGGAGPPPCACRTFFRVCLKHYQAS
VSPEPPCTYGSVATPVLGVDSFSLPDGGGADSAFSNPIRFPFGFTWPGTFSLIIEALHTDSPDDLATENP
ERLISRLATQRHLTVGEEWSQDLHSSGRDLDKYSYRFVCDHEYYGEGCSVFCRPRDDAFGHFTCGERGEK
VCNPGWKGPYCTEPICLPGCDEQHGFCDKPGECKCRVWQGRYCDECIRYPGCLHGTCQQPWQCNCQ
EGW
GGLFCNQDLNYCTHHKPKNGATCTNTGQGSYTCSCRPGYTGATCELGIDECDPSPCKNGGSCTDLENSY
SCTCPPGFYGKICELSAMTCADGPCFNNGRCS DSPDGGYSCRCPVGYSGFNCEKKIDYCSSSPCSNGAKC
VDLGDAYLCRCQAGFSGRHCDNVDCCASSPCANGGTCRDGVNDFSCPPGYTGRNCSAPVSRCEHAP
C
HNGATCHERGHRYVCECARGYGGPNCQFLLPELPPGPAVVDLTKLEGQGGPFPPWAVCAGVILVLMML
L
GCAAWVCVRLRLQKHRPPADPCRGETETMNNLANCQREKDISVSIIGATQIKNTNKKADFHGDHSADK
N
DFKARYPAVDYNLVQDLKGD DTA VRDAHSKRDTKCQPQSSGEEKGTPTTLRGGEASERKRPD SGCSTSK
DTKYQSVYVISEEKDECVIATEV

TRTRPLEQKLISEEDLAANDILDYKDDDDKV

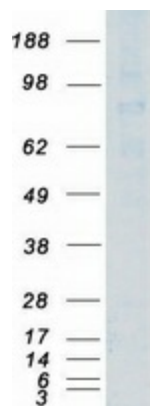
Tag: C-Myc/DDK
Predicted MW: 77.9 kDa
Concentration: >0.05 µg/µL as determined by microplate BCA method
Purity: > 80% as determined by SDS-PAGE and Coomassie blue staining
Buffer: 25 mM Tris-HCl, 100 mM glycine, pH 7.3, 10% glycerol



[View online »](#)

Preparation:	Recombinant protein was captured through anti-DDK affinity column followed by conventional chromatography steps.
Note:	For testing in cell culture applications, please filter before use. Note that you may experience some loss of protein during the filtration process.
Storage:	Store at -80°C.
Stability:	Stable for 12 months from the date of receipt of the product under proper storage and handling conditions. Avoid repeated freeze-thaw cycles.
RefSeq:	<u>NP_005609</u>
Locus ID:	28514
UniProt ID:	<u>O00548</u>
RefSeq Size:	3366
Cytogenetics:	6q27
RefSeq ORF:	2169
Synonyms:	Delta; DELTA1; DL1; NEDBAS
Summary:	DLL1 is a human homolog of the Notch Delta ligand and is a member of the delta/serrate/jagged family. It plays a role in mediating cell fate decisions during hematopoiesis. It may play a role in cell-to-cell communication. [provided by RefSeq, Jul 2008]
Protein Families:	Adult stem cells, Cancer stem cells, ES Cell Differentiation/IPS, Stem cell relevant signaling - DSL/Notch pathway, Transmembrane
Protein Pathways:	Notch signaling pathway

Product images:



Coomassie blue staining of purified DLL1 protein (Cat# TP322399). The protein was produced from HEK293T cells transfected with DLL1 cDNA clone (Cat# [RC222399]) using MegaTran 2.0 (Cat# [TT210002]).