

Product datasheet for **TP322388**

TEX55 (NM_152539) Human Recombinant Protein

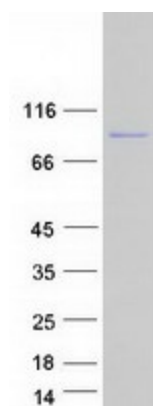
Product data:

Product Type:	Recombinant Proteins
Description:	Recombinant protein of human chromosome 3 open reading frame 30 (C3orf30), 20 µg
Species:	Human
Expression Host:	HEK293T
Expression cDNA Clone or AA Sequence:	>RC222388 representing NM_152539 Red =Cloning site Green =Tags(s)
	<p>MEEPPQEALAEPLKHESPAAPSSAGHTKGQEEDDQKNQAERKADNHTAHRIADQTALRVPSQAESSIFSQ ATNGVAEQNGHSTPGQAGRRASNPADVSDLRADDQVNQTPSEQTKGKASSQANNVQHEQSDGQVSGLTEE RTAEQTERRLPQTQAERRTSQQIDGRLAMPDQGRSQRQTDHRMAGQSERRASEQMDRRMSGEAERTSEI THRLSKLSERRPSVQIDSGSSVPSDQSPSVQIDSGSSVPSDQRPVQIDRRMSGKVRRSSEKTDYRLAG LADPGTSEQTDLRLYGLVDHKTSVKTHHQVYGQATELAEHQAIQAHSNADQPPVDNAHYTESDQTDHLA DRQANHDKDQLSYETRGQSEDRIFFPQLGNSKEDKEADYRVQPCKFEDSQVDLNSKPSVEMETQNATTIPP YNPVDARFTSNFQAKDQALFRLPSILSKLNYTSSQEKTAIVTKSDEFSEIDQGKGHYHNRNQTYRRFPS IVYEDPYQVSLQYMEKHILQIFQQITENLVYEKPEDPLNFMCLCQV</p> <p>TRTRPLEQKLISEEDLAANDILDYKDDDDKV</p>
Tag:	C-Myc/DDK
Predicted MW:	60 kDa
Concentration:	>0.05 µg/µL as determined by microplate BCA method
Purity:	> 80% as determined by SDS-PAGE and Coomassie blue staining
Buffer:	25 mM Tris-HCl, 100 mM glycine, pH 7.3, 10% glycerol
Preparation:	Recombinant protein was captured through anti-DDK affinity column followed by conventional chromatography steps.
Note:	For testing in cell culture applications, please filter before use. Note that you may experience some loss of protein during the filtration process.
Storage:	Store at -80°C.
Stability:	Stable for 12 months from the date of receipt of the product under proper storage and handling conditions. Avoid repeated freeze-thaw cycles.



[View online »](#)

RefSeq: NP_689752
 Locus ID: 152405
 UniProt ID: Q96M34
 RefSeq Size: 1814
 Cytogenetics: 3q13.32
 RefSeq ORF: 1608
 Synonyms: C3orf30; TSCPA

Product images:


Coomassie blue staining of purified TEX55 protein (Cat# TP322388). The protein was produced from HEK293T cells transfected with TEX55 cDNA clone (Cat# [RC222388]) using MegaTran 2.0 (Cat# [TT210002]).