

## Product datasheet for TP322379M

### AIP1 (MAGI2) (NM\_012301) Human Recombinant Protein

#### Product data:

Product Type:	Recombinant Proteins
Description:	Recombinant protein of human membrane associated guanylate kinase, WW and PDZ domain containing 2 (MAGI2), 100 µg
Species:	Human
Expression Host:	HEK293T
Expression cDNA Clone or AA Sequence:	>RC222379 representing NM_012301 Red=Cloning site Green=Tags(s)

MSKSLKKKSHWTSKVHESVIGRNPEGQLGFELKGAENGQFPYLGEVKPGKVAYESGSKLVSEELLLEVN  
ETPVAGLTIRDVLAVIKHCKDPLRLKCVKQGIVDKDLRHYLNLRQKGSVDHELQQIIRDNLRLRTPC  
TTRPHKEGEVPGVDYIFITVEDFMELEKSGALLESPTYEDNYYGTPKPPAEPAPLLLNVTQILPGATPS  
AEGKRKRKNSVSNMEKASIEPPEEEEEERPVVNGNGVWVTPESSEHEDKSAGASGEMPSQPYPAPVYSQP  
EELKEQMDDTKPTKPEDNEEPDPLPDNWEMAYTEKGEVYFIDHNTKTTSWLDPRLAKKAKPPEECKENEL  
PYGWEKIDDIYGTYYVDHINRRTQFENPVLEAKRKLQQHNPHTELGKPLQAPGFREKPLFTRDASQL  
KGTFLSTLLKKS NMGFGFTIIGGDEPDEFQVKSVIPDGAAQDGKMETGDVIVYINEVCVLGHTHADVV  
KLFQSVPIGQSVNLVLCRGYPLFPDPEDPANSMPVPLAIMERPPPVMVNGRHNHYETYLEYISRTS QSVPD  
ITDRPPHSLHSMPTDGQLDGTYPVVHDDNVSMASGATQAEMLTLIVKGAQGFQFTIADSPTGQRVKQ  
ILDIQGCPGLCEGLDIVEINQQNVQNLSTHEVDILKDCPIGSETSLIHRGGFFSPWKTPKIMDRWEN  
QGSPQTSLSAPAIPQNLFPFPALHRSSFDPSTEAFDPRKPDYELYEKSRAYESRQQVPPRTSFRMDSS  
GPDYKELDVHLRRMESGFGFRILGGDEPGQPILIGAVIAMGSADRDGRLHPGDELVYVDGIPVAGKTHRY  
VIDLMHHAARNGQVNLTVRRKVLGGEPCEPENGSRPGSVSTHHSSPRSDYATYTNNSNHAAPSSNASPPEG  
FASHSLQTSDVVIHRKENEGFGFVIISLNRPESGSTITVPHKIGRIIDGSPADRCALKVGDRLAVNG  
QSIINMPHADIVKLIK DAGLSVTLRIIPQEELNSPTSAPSSEKQSPMAQQSPLAQQSPLAQPSPATPNP  
IAQPAPPQPLQLQGHENSYRSEVKARQDVKPDIRQPPFTDYRQPPLDYRQPPGGDYQQPPPLDYRQPPL  
DYRQHSPDTRQYPLSDYRQPQDFDYFTVDMKAGKGFSGSIRGGREYKMDLYVLRLEADGPAIRNGRMRV  
GDQIIEINGESTRDMTHARAIELIKSGRRVRLLLKRGTVQVPEYDEPAPWSSPAAAAPGLPEVGVSLDD  
GLAPFSPSHPAPSPDPSHQISPGPTWDIKREHDVRKPKELSACGQKQRLGEQRERSASPQRAARPRLEE  
APGGQGRPEAGRPASEARAPGLAAADAADAARAGGKEAPRAAAGSELCRREGPGAAPAFAGPGGGGSGAL  
EAEGRAGARAGPRPGPRPPGGAPARKAAVAPGPWKVPGSKLPSVLKPGASAASR

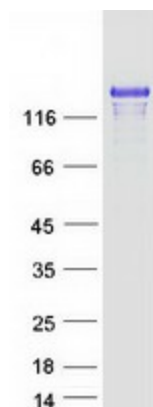
TRTRPLEQKLISEEDLAANDILDYKDDDDKV

Tag: C-Myc/DDK



[View online >](#)

<b>Predicted MW:</b>	158.6 kDa
<b>Concentration:</b>	>0.05 µg/µL as determined by microplate BCA method
<b>Purity:</b>	> 80% as determined by SDS-PAGE and Coomassie blue staining
<b>Buffer:</b>	25 mM Tris-HCl, 100 mM glycine, pH 7.3, 10% glycerol
<b>Preparation:</b>	Recombinant protein was captured through anti-DDK affinity column followed by conventional chromatography steps.
<b>Note:</b>	For testing in cell culture applications, please filter before use. Note that you may experience some loss of protein during the filtration process.
<b>Storage:</b>	Store at -80°C.
<b>Stability:</b>	Stable for 12 months from the date of receipt of the product under proper storage and handling conditions. Avoid repeated freeze-thaw cycles.
<b>RefSeq:</b>	<a href="#">NP_036433</a>
<b>Locus ID:</b>	9863
<b>UniProt ID:</b>	<a href="#">Q86UL8</a>
<b>RefSeq Size:</b>	6880
<b>Cytogenetics:</b>	7q21.11
<b>RefSeq ORF:</b>	4365
<b>Synonyms:</b>	ACVRIP1; AIP-1; AIP1; ARIP1; MAGI-2; NPHS15; SSCAM
<b>Summary:</b>	The protein encoded by this gene interacts with atrophin-1. Atrophin-1 contains a polyglutamine repeat, expansion of which is responsible for dentatorubral and pallidolusian atrophy. This encoded protein is characterized by two WW domains, a guanylate kinase-like domain, and multiple PDZ domains. It has structural similarity to the membrane-associated guanylate kinase homologue (MAGUK) family. [provided by RefSeq, Jul 2008]
<b>Protein Families:</b>	Druggable Genome
<b>Protein Pathways:</b>	Tight junction

**Product images:**

Coomassie blue staining of purified MAGI2 protein (Cat# [TP322379]). The protein was produced from HEK293T cells transfected with MAGI2 cDNA clone (Cat# [RC222379]) using MegaTran 2.0 (Cat# [TT210002]).