

Product datasheet for TP322379

AIP1 (MAGI2) (NM_012301) Human Recombinant Protein

Product data:

Product Type: Recombinant Proteins

Description: Recombinant protein of human membrane associated guanylate kinase, WW and PDZ domain containing 2 (MAGI2), 20 µg

Species: Human

Expression Host: HEK293T

Expression cDNA Clone or AA Sequence: >RC222379 representing NM_012301
Red=Cloning site Green=Tags(s)

MSKSLKKKSHWTSKVHESVIGRNPEGQLGFELKGAENGQFPYLGEVKPGKVAYESGSKLVSEELLLEVN
ETPVAGLTIRDVLAVIKHCKDPLRLKCVKQGIVDKDLRHYLNLRQKGSVDHELQIIRDNLRLRTPC
TTRPHKEGEVPGVDYIFITVEDFMELEKSGALLESPTYEDNYYGTPKPPAEPAPLLLNVTQILPGATPS
AEGKRKRKNSVSNMEKASIEPPEEEEEERPVVNGNGVWVTPESSEHEDKSAGASGEMPSQPYPAPVYSQP
EELKEQMDDTKPTKPEDNEEPDPLPDNWEMAYTEKGEVYFIDHNTKTTSWLDPRLAKKAKPPEECKENEL
PYGWEKIDDIYGTYYVDHINRRTQFENPVLEAKRKLQQHNPHTELGKPLQAPGFREKPLFTRDASQL
KGTFLSTLLKKS NMGFGFTIIGGDEPDEFLLQVKSVIPDGAAQDGKMETGDVIVYINEVCVLGHTHADVV
KLFQSVPIGQSVNLVLCRGYPLFPDPEDPANSMPVPLAIMERPPPVMVNGRHNHYETYLEYISRTS QSVPD
ITDRPPHSLHSMPTDGQLDGTYPVHDDNVSMASGATQAEMLTLIVKGAQGFQFTIADSPTGQRVKQ
ILDIQGCPGLCEGLDIVEINQQNVQNLSTHEVDILKDCPIGSETSLIHRGGFFSPWKTPKIMDRWEN
QGSPQTSLSAPAIPQNLFPFPALHRSSFDPSTEAFDPRKPDYELYEKSRAYESRQQVPPRTSFRMDSS
GPDYKELDVHLRRMESGFGFRILGGDEPGQPILIGAVIAMGSADRDGRLHPGDELVYVDGIPVAGKTHRY
VIDLMHHAARNGQVNLTVRRKVLGGEPENGRSPGSVSTHHSSPRSDYATYTNNSNHAAPSSNASPPEG
FASHSLQTSDVVIHRKENEGFGFVIISLNRPESGSTITVPHKIGRIIDGSPADRCALKVGDRLAVNG
QSIINMPHADIVKLIK DAGLSVTLRIIPQEELNSPTSAPSSEKQSPMAQQSPLAQQSPLAQPSPATPNP
IAQPAPPQPLQLQGHENSYSRSEVKARQDVKPDIRQPPFTDYRQPPLDYRQPPGGDYQQPPPLDYRQPPL
DYRQHSPDTRQYPLSDYRQPQDFDYFTVDMKGAKEGFGFSIRGGREYKMDLYVLRLEADGPAIRNGRMRV
GDQIIEINGESTRDMTHARAIELIKSGRRVRLLLKRGTGQVPEYDEPAPWSSPAAAAPGLPEVGVSLDD
GLAPFSPHPAPPSDPHQISPGPTWDIKREHDVRKPKELSACGQKQRLGEQRERSASPQRAARPRLEE
APGGQGRPEAGRPASEARAPGLAAADAADAARAGGKEAPRAAAGSELCRREGPGAAPAFAGPGGGGSGAL
EAEGRAGARAGPRPGPRPPGGAPARKAAVAPGPWKVPGSKLPSVLKPGASAASR

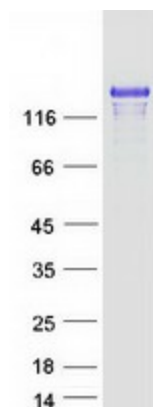
TRTRPLEQKLISEEDLAANDILDYKDDDDKV

Tag: C-Myc/DDK



[View online »](#)

Predicted MW:	158.6 kDa
Concentration:	>0.05 µg/µL as determined by microplate BCA method
Purity:	> 80% as determined by SDS-PAGE and Coomassie blue staining
Buffer:	25 mM Tris-HCl, 100 mM glycine, pH 7.3, 10% glycerol
Preparation:	Recombinant protein was captured through anti-DDK affinity column followed by conventional chromatography steps.
Note:	For testing in cell culture applications, please filter before use. Note that you may experience some loss of protein during the filtration process.
Storage:	Store at -80°C.
Stability:	Stable for 12 months from the date of receipt of the product under proper storage and handling conditions. Avoid repeated freeze-thaw cycles.
RefSeq:	NP_036433
Locus ID:	9863
UniProt ID:	Q86UL8
RefSeq Size:	6880
Cytogenetics:	7q21.11
RefSeq ORF:	4365
Synonyms:	ACVRIP1; AIP-1; AIP1; ARIP1; MAGI-2; NPHS15; SSCAM
Summary:	The protein encoded by this gene interacts with atrophin-1. Atrophin-1 contains a polyglutamine repeat, expansion of which is responsible for dentatorubral and pallidolusian atrophy. This encoded protein is characterized by two WW domains, a guanylate kinase-like domain, and multiple PDZ domains. It has structural similarity to the membrane-associated guanylate kinase homologue (MAGUK) family. [provided by RefSeq, Jul 2008]
Protein Families:	Druggable Genome
Protein Pathways:	Tight junction

Product images:

Coomassie blue staining of purified MAGI2 protein (Cat# TP322379). The protein was produced from HEK293T cells transfected with MAGI2 cDNA clone (Cat# [RC222379]) using MegaTran 2.0 (Cat# [TT210002]).