

Product datasheet for **TP322378L**

SHISAL2A (NM_001042693) Human Recombinant Protein

Product data:

Product Type:	Recombinant Proteins
Description:	Recombinant protein of human family with sequence similarity 159, member A (FAM159A), 1 mg
Species:	Human
Expression Host:	HEK293T
Expression cDNA Clone or AA Sequence:	>RC222378 representing NM_001042693 Red =Cloning site Green =Tags(s) MSGACTSYVSAEQEVVRGFSCPRPGGEAAAVFCCGFRDHKYCCDDPHSFFPYEHSYMWWSIGALIGLSV AAVLLAFIVTACVLCYLFISSKPHTKLDLGLSLQTAGPEEVSPDCQGVNTGMAAEVPKVSPLQQSYSL NPQLESNEGQAVNSKRLLHHCFMATVTTSDIPGSPEEASVPNPDLCPVP TRTRPLEQKLISEEDLAANDILDYKDDDDKV
Tag:	C-Myc/DDK
Predicted MW:	20.1 kDa
Concentration:	>0.05 µg/µL as determined by microplate BCA method
Purity:	> 80% as determined by SDS-PAGE and Coomassie blue staining
Buffer:	25 mM Tris-HCl, 100 mM glycine, pH 7.3, 10% glycerol
Preparation:	Recombinant protein was captured through anti-DDK affinity column followed by conventional chromatography steps.
Note:	For testing in cell culture applications, please filter before use. Note that you may experience some loss of protein during the filtration process.
Storage:	Store at -80°C.
Stability:	Stable for 12 months from the date of receipt of the product under proper storage and handling conditions. Avoid repeated freeze-thaw cycles.
RefSeq:	<u>NP_001036158</u>
Locus ID:	348378
UniProt ID:	<u>Q6UWV7</u>



[View online »](#)

RefSeq Size: 698

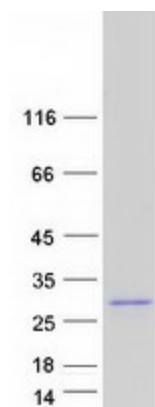
Cytogenetics: 1p32.3

RefSeq ORF: 570

Synonyms: FAM159A; PRO7171; WWLS2783

Protein Families: Transmembrane

Product images:



Coomassie blue staining of purified SHISAL2A protein (Cat# [TP322378]). The protein was produced from HEK293T cells transfected with SHISAL2A cDNA clone (Cat# [RC222378]) using MegaTran 2.0 (Cat# [TT210002]).