

## Product datasheet for TP322302M

### CKII alpha (CSNK2A1) (NM\_001895) Human Recombinant Protein

#### Product data:

|  |  |
|--|--|
| <b>Product Type:</b>                         | Recombinant Proteins   |
| <b>Description:</b>                          | Recombinant protein of human casein kinase 2, alpha 1 polypeptide (CSNK2A1), transcript variant 2, 100 µg  |
| <b>Species:</b>                              | Human  |
| <b>Expression Host:</b>                      | HEK293T  |
| <b>Expression cDNA Clone or AA Sequence:</b> | >RC222302 representing NM_001895<br><b>Red</b> =Cloning site <b>Green</b> =Tags(s)   |
|  | <p>MSGPVPSPRARVYTDVNTHRPREYWDYESHVVEWGNQDDYQLVRKLGKGYSEVFEAINITNNEKVVVKIL<br/>KPVKKKKIKREIKILENLRGGPNITLADIVKDPVSRTPALVFEHVNNTDFKQLYQTLTDYDIRFMYEI<br/>LKALDYCHSMGIMHRDVKPHNVMIDHEHRKLRLLIDWGLAEFYHPGQEYNVRVASRYFKGPELLVDYQMYD<br/>YSLDMWSLGCMLASMIFRKEPFFHGHNDYDQLVRIAKVLGTEDLYDYIDKYNIELDPRFNDILGRHSRKR<br/>WERFVHSENQHLVSPEALDFDKLLRYDHQSRLTAREAMEHPYFYTVVKDQARMGSSSMPGGSTPVSSAN<br/>MMSGISSVPTPSPLGPLAGSPVIAAANPLGMPVPAAGAQQ</p> <p><b>TRTRPLEQKLISEEDLAANDILDYKDDDDKV</b></p> |
| <b>Tag:</b>                                  | C-Myc/DDK  |
| <b>Predicted MW:</b>                         | 45 kDa   |
| <b>Concentration:</b>                        | >0.05 µg/µL as determined by microplate BCA method   |
| <b>Purity:</b>                               | > 80% as determined by SDS-PAGE and Coomassie blue staining  |
| <b>Buffer:</b>                               | 25 mM Tris-HCl, 100 mM glycine, pH 7.3, 10% glycerol   |
| <b>Preparation:</b>                          | Recombinant protein was captured through anti-DDK affinity column followed by conventional chromatography steps.   |
| <b>Note:</b>                                 | For testing in cell culture applications, please filter before use. Note that you may experience some loss of protein during the filtration process.   |
| <b>Storage:</b>                              | Store at -80°C.  |
| <b>Stability:</b>                            | Stable for 12 months from the date of receipt of the product under proper storage and handling conditions. Avoid repeated freeze-thaw cycles.  |
| <b>RefSeq:</b>                               | <u><a href="#">NP_001886</a></u>   |



[View online »](#)

Locus ID: 1457

UniProt ID: [P68400](#)

RefSeq Size: 2732

Cytogenetics: 20p13

RefSeq ORF: 1173

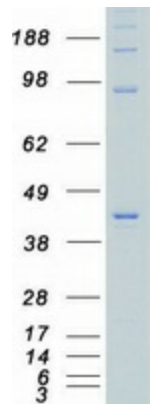
Synonyms: CK2A1; Cka1; Cka2; CKII; OCNDS

**Summary:** Casein kinase II is a serine/threonine protein kinase that phosphorylates acidic proteins such as casein. It is involved in various cellular processes, including cell cycle control, apoptosis, and circadian rhythm. The kinase exists as a tetramer and is composed of an alpha, an alpha-prime, and two beta subunits. The alpha subunits contain the catalytic activity while the beta subunits undergo autophosphorylation. The protein encoded by this gene represents the alpha subunit. Multiple transcript variants encoding different protein isoforms have been found for this gene. [provided by RefSeq, Apr 2018]

**Protein Families:** Druggable Genome, ES Cell Differentiation/IPS, Protein Kinase

**Protein Pathways:** Adherens junction, Tight junction, Wnt signaling pathway

### Product images:



Coomassie blue staining of purified CSNK2A1 protein (Cat# [TP322302]). The protein was produced from HEK293T cells transfected with CSNK2A1 cDNA clone (Cat# [RC222302]) using MegaTran 2.0 (Cat# [TT210002]).