

Product datasheet for **TP322302**

CKII alpha (CSNK2A1) (NM_001895) Human Recombinant Protein

Product data:

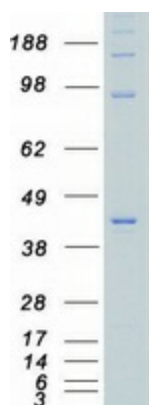
Product Type:	Recombinant Proteins
Description:	Recombinant protein of human casein kinase 2, alpha 1 polypeptide (CSNK2A1), transcript variant 2, 20 µg
Species:	Human
Expression Host:	HEK293T
Expression cDNA Clone or AA Sequence:	>RC222302 representing NM_001895 Red=Cloning site Green=Tags(s)
	<p>MSGPVPSPRARVYTDVNTHRPREYWDYESHVVEWGNQDDYQLVRKLGRGKYSEVF EAINITNNEKVVVKIL KPVKKKKIKREIKILENLRGGPNITLADIVKDPVSRTPALVFEHVNNTDFKQLYQTLTDYDIRFMYEI LKALDYCHSMGIMHRDVKPHNVMIDHEHRKLRLIDWGLAEFYHPGQEYNVRVASRYFKGPELLVDYQMYD YSLDMWSLGCMLASMIFRKEPFFHGHNDYDQLVRIAKVLGTEDLYDYIDKYNIELDPRFNDILGRHSRKR WERFVHSENQHLVSPEALDFDKLLRYDHQSRLTAREAMEHPYFYTVVKDQARMGSSSMPGGSTPVSSAN MMSGISSVPTPSPLGPLAGSPVIAAANPLGMPVPAAAGAQQ</p> <p>TRTRPLEQKLISEEDLAANDILDYKDDDDKV</p>
Tag:	C-Myc/DDK
Predicted MW:	45 kDa
Concentration:	>0.05 µg/µL as determined by microplate BCA method
Purity:	> 80% as determined by SDS-PAGE and Coomassie blue staining
Buffer:	25 mM Tris-HCl, 100 mM glycine, pH 7.3, 10% glycerol
Preparation:	Recombinant protein was captured through anti-DDK affinity column followed by conventional chromatography steps.
Note:	For testing in cell culture applications, please filter before use. Note that you may experience some loss of protein during the filtration process.
Storage:	Store at -80°C.
Stability:	Stable for 12 months from the date of receipt of the product under proper storage and handling conditions. Avoid repeated freeze-thaw cycles.
RefSeq:	<u>NP_001886</u>



[View online »](#)

Locus ID:	1457
UniProt ID:	P68400
RefSeq Size:	2732
Cytogenetics:	20p13
RefSeq ORF:	1173
Synonyms:	CK2A1; Cka1; Cka2; CKII; OCNDS
Summary:	Casein kinase II is a serine/threonine protein kinase that phosphorylates acidic proteins such as casein. It is involved in various cellular processes, including cell cycle control, apoptosis, and circadian rhythm. The kinase exists as a tetramer and is composed of an alpha, an alpha-prime, and two beta subunits. The alpha subunits contain the catalytic activity while the beta subunits undergo autophosphorylation. The protein encoded by this gene represents the alpha subunit. Multiple transcript variants encoding different protein isoforms have been found for this gene. [provided by RefSeq, Apr 2018]
Protein Families:	Druggable Genome, ES Cell Differentiation/IPS, Protein Kinase
Protein Pathways:	Adherens junction, Tight junction, Wnt signaling pathway

Product images:



Coomassie blue staining of purified CSNK2A1 protein (Cat# TP322302). The protein was produced from HEK293T cells transfected with CSNK2A1 cDNA clone (Cat# [RC222302]) using MegaTran 2.0 (Cat# [TT210002]).