

## Product datasheet for **TP322271L**

### Hemopexin (HPX) (NM\_000613) Human Recombinant Protein

#### Product data:

Product Type:	Recombinant Proteins
Description:	Recombinant protein of human hemopexin (HPX), 1 mg
Species:	Human
Expression Host:	HEK293T
Expression cDNA Clone or AA Sequence:	>RC222271 representing NM_000613 <b>Red</b> =Cloning site <b>Green</b> =Tags(s)
	<p>MARVLGAPVALGLWSLCWSLAIATPLPPTSAHGNVAEGETKPDVTERCSDGWSFDATLDDNGTMLFF KGEFVWKSHKWDRELISERWKNFSPVDAAFRQGHNSVFLIKGDKVWVYPPEKKEKGYPKLLQDEFPGIP SPLDAAVECHRGECAEGLVFFQGDREWFWDLATGTMKERSWPAVGNCSALRWLGRIYCFQGNQFLRFD PVRGEVPPRYPRDVRDYFMPGPRGHGHRNGTGHGNSTHHGPEYMRCSPLVLSALTSNDHGATYAFSGT HYWRLDTSRDGWHSPWIAHQWPQGSAVDAAFSWEEKLYLVQGTQVYVFLTKGGYTLVSGYPKRLEKEVG TPHGIILDSVDAAFICPGSSRLHIMAGRRLWWLDLKSGAQATWTELPWPHEKVDGALCMEKSLGPNSSCA NGPGLYLIHGPNLYCYSDEKLNAAKALPQPQNVTSLLGCTH</p> <p><b>TRTRPLEQKLISEEDLAANDILDYKDDDDKV</b></p>
Tag:	C-Myc/DDK
Predicted MW:	49.2 kDa
Concentration:	>0.05 µg/µL as determined by microplate BCA method
Purity:	> 80% as determined by SDS-PAGE and Coomassie blue staining
Buffer:	25 mM Tris-HCl, 100 mM glycine, pH 7.3, 10% glycerol
Preparation:	Recombinant protein was captured through anti-DDK affinity column followed by conventional chromatography steps.
Note:	For testing in cell culture applications, please filter before use. Note that you may experience some loss of protein during the filtration process.
Storage:	Store at -80°C.
Stability:	Stable for 12 months from the date of receipt of the product under proper storage and handling conditions. Avoid repeated freeze-thaw cycles.
RefSeq:	<a href="#">NP_000604</a>



[View online »](#)

Locus ID: 3263

UniProt ID: [P02790](#), [Q9BS19](#), [Q5T248](#)

RefSeq Size: 1389

Cytogenetics: 11p15.4

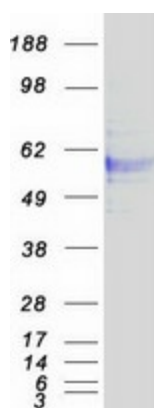
RefSeq ORF: 1386

Synonyms: HX

**Summary:** This gene encodes a plasma glycoprotein that binds heme with high affinity. The encoded protein is an acute phase protein that transports heme from the plasma to the liver and may be involved in protecting cells from oxidative stress. [provided by RefSeq, Apr 2009]

**Protein Families:** Secreted Protein

### Product images:



Coomassie blue staining of purified HPX protein (Cat# [TP322271]). The protein was produced from HEK293T cells transfected with HPX cDNA clone (Cat# [RC222271]) using MegaTran 2.0 (Cat# [TT210002]).