

Product datasheet for **TP322271**

Hemopexin (HPX) (NM_000613) Human Recombinant Protein

Product data:

Product Type: Recombinant Proteins

Description: Recombinant protein of human hemopexin (HPX), 20 µg

Species: Human

Expression Host: HEK293T

Expression cDNA >RC222271 representing NM_000613

Clone or AA Red=Cloning site Green=Tags(s)

Sequence:

MARVLGAPVALGLWSLCWSLAIATPLPPTSAHGNVAEGETKPPDPVTERCSDGWSFDATLDDNGTMLFF
KGEFVWKSHKWDRELISERWKNFSPVDAAFRQGHNSVFLIKGDKVWVYPPEKKEKGYPKLLQDEFPGIP
SPLDAAVECHRGECAEGLVFFQGDREWFWDLATGTMKERSWPAVGNCSALRWLGRIYCFQGNQFLRFD
PVRGEVPPRYPRDVRDYFMPGGRGHGHRNGTGHGNSTHHGPEYMRCSPHLVSALTSNDHGYAFSGT
HYWRLDTSRDGWSWPIAHQWPQGSAVDAAFSWEEKLYLVQGTQVYVFLTKGGYTLVSGYPKRLEKEVG
TPHGIILDSVDAAFICPGSSRLHIMAGRRLWWLDLKSGAQATWTELPWPHEKVDGALCMEKSLGPNSSCA
NGPGLYLIHGPNLYCYSDVEKLNAAKALPQPQNVTSLLGCTH

TRTRPLEQKLISEEDLAANDILDYKDDDDKV

Tag: C-Myc/DDK

Predicted MW: 49.2 kDa

Concentration: >0.05 µg/µL as determined by microplate BCA method

Purity: > 80% as determined by SDS-PAGE and Coomassie blue staining

Buffer: 25 mM Tris-HCl, 100 mM glycine, pH 7.3, 10% glycerol

Preparation: Recombinant protein was captured through anti-DDK affinity column followed by conventional chromatography steps.

Note: For testing in cell culture applications, please filter before use. Note that you may experience some loss of protein during the filtration process.

Storage: Store at -80°C.

Stability: Stable for 12 months from the date of receipt of the product under proper storage and handling conditions. Avoid repeated freeze-thaw cycles.

RefSeq: [NP_000604](#)



[View online >](#)

Locus ID: 3263

UniProt ID: [P02790](#), [Q9BS19](#), [Q5T248](#)

RefSeq Size: 1389

Cytogenetics: 11p15.4

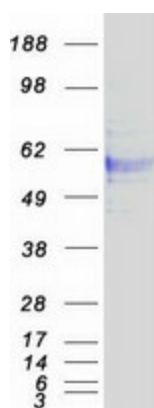
RefSeq ORF: 1386

Synonyms: HX

Summary: This gene encodes a plasma glycoprotein that binds heme with high affinity. The encoded protein is an acute phase protein that transports heme from the plasma to the liver and may be involved in protecting cells from oxidative stress. [provided by RefSeq, Apr 2009]

Protein Families: Secreted Protein

Product images:



Coomassie blue staining of purified HPX protein (Cat# TP322271). The protein was produced from HEK293T cells transfected with HPX cDNA clone (Cat# [RC222271]) using MegaTran 2.0 (Cat# [TT210002]).