

## Product datasheet for **TP322263L**

### Annexin VIII (ANXA8) (NM\_001040084) Human Recombinant Protein

#### Product data:

Product Type:	Recombinant Proteins
Description:	Recombinant protein of human annexin A8 (ANXA8), 1 mg
Species:	Human
Expression Host:	HEK293T
Expression cDNA Clone or AA Sequence:	>RC222263 protein sequence <b>Red</b> =Cloning site <b>Green</b> =Tags(s)

MAWWKSWIEQEGVTVKSSSHFNPDPAETLYKAMKGIGTNEQAIIDVLTKRSNTQRQQIAKSFKAQFGKD  
LTETLKSELGKFERLIVALMYPYPYEAKEKELHDAMKGLGTKEGVIIILASRTKNQLREIMKAYEEDYG  
SSLEEDIQADTSGYLERILVCLLQGSRDDVSSFVDPALALQDAQDLYAAGEKIRGTDEMFKFITILCTRSA  
THLLRVFEEYEKIANKSIEDSIKSETHGSLEEAMLTVVKCTQNLHSYFAERLYAMKGAGTRDGTLRNI  
VSRSEIDLNLIKCHFKKMYGKTLSSMIMEDTSGDYKNALLSLVGSDP

**SGPTRTRPLEQKLISEEDLAANDILDYKDDDDKV**

Tag:	C-Myc/DDK
Predicted MW:	36.7 kDa
Concentration:	>0.05 µg/µL as determined by microplate BCA method
Purity:	> 80% as determined by SDS-PAGE and Coomassie blue staining
Buffer:	25 mM Tris-HCl, 100 mM glycine, pH 7.3, 10% glycerol
Preparation:	Recombinant protein was captured through anti-DDK affinity column followed by conventional chromatography steps.
Note:	For testing in cell culture applications, please filter before use. Note that you may experience some loss of protein during the filtration process.
Storage:	Store at -80°C.
Stability:	Stable for 12 months from the date of receipt of the product under proper storage and handling conditions. Avoid repeated freeze-thaw cycles.
RefSeq:	<a href="#">NP_001035173</a>
Locus ID:	653145

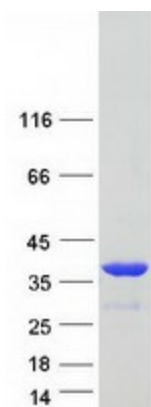


[View online »](#)

UniProt ID: [P13928](#)  
RefSeq Size: 2070  
Cytogenetics: 10q11.22  
RefSeq ORF: 981  
Synonyms: ANX8; CH17-360D5.2

**Summary:** This gene encodes a member of the annexin family of evolutionarily conserved Ca<sup>2+</sup> and phospholipid binding proteins. The encoded protein may function as an anticoagulant that indirectly inhibits the thromboplastin-specific complex. Overexpression of this gene has been associated with acute myelocytic leukemia. A highly similar duplicated copy of this gene is found in close proximity on the long arm of chromosome 10. [provided by RefSeq, Jul 2008]

### Product images:



Coomassie blue staining of purified ANXA8 protein (Cat# [TP322263]). The protein was produced from HEK293T cells transfected with ANXA8 cDNA clone (Cat# [RC222263]) using MegaTran 2.0 (Cat# [TT210002]).