

## Product datasheet for **TP322245M**

### Motilin (MLN) (NM\_002418) Human Recombinant Protein

#### Product data:

Product Type:	Recombinant Proteins
Description:	Recombinant protein of human motilin (MLN), transcript variant 1, 100 µg
Species:	Human
Expression Host:	HEK293T
Expression cDNA Clone or AA Sequence:	>RC222245 protein sequence <b>Red</b> =Cloning site <b>Green</b> =Tags(s)
	 MVSRKAVAALLVVHAAAMLASQTEAFVPIFTYGELQRMQEKERNKGQKKSLSVWQRSGEEGPVDPAEPIR EEENEMIKLTAPLEIGMRMNSRQLEKYPATLEGLLSEMLPQHAAK  <b>TRTRPLEQKLISEEDLAANDILDYKDDDDKV</b>
Tag:	C-Myc/DDK
Predicted MW:	10.3 kDa
Concentration:	>0.05 µg/µL as determined by microplate BCA method
Purity:	> 80% as determined by SDS-PAGE and Coomassie blue staining
Buffer:	25 mM Tris-HCl, 100 mM glycine, pH 7.3, 10% glycerol
Preparation:	Recombinant protein was captured through anti-DDK affinity column followed by conventional chromatography steps.
Note:	For testing in cell culture applications, please filter before use. Note that you may experience some loss of protein during the filtration process.
Storage:	Store at -80°C.
Stability:	Stable for 12 months from the date of receipt of the product under proper storage and handling conditions. Avoid repeated freeze-thaw cycles.
RefSeq:	<a href="#">NP_002409</a>
Locus ID:	4295
UniProt ID:	<a href="#">P12872</a>
RefSeq Size:	572
Cytogenetics:	6p21.31



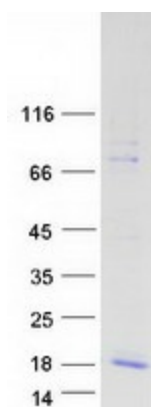
[View online »](#)

RefSeq ORF: 345

**Summary:** This gene encodes a small peptide hormone that is secreted by cells of the small intestine to regulate gastrointestinal contractions and motility. Proteolytic processing of the secreted protein produces the mature peptide and a byproduct referred to as motilin-associated peptide (MAP). Three transcript variants encoding different preproprotein isoforms but the same mature peptide have been found for this gene. [provided by RefSeq, May 2010]

**Protein Families:** Druggable Genome, Secreted Protein, Transmembrane

### Product images:



Coomassie blue staining of purified MLN protein (Cat# [TP322245]). The protein was produced from HEK293T cells transfected with MLN cDNA clone (Cat# [RC222245]) using MegaTran 2.0 (Cat# [TT210002]).