

## Product datasheet for **TP322245L**

### Motilin (MLN) (NM\_002418) Human Recombinant Protein

#### Product data:

**Product Type:** Recombinant Proteins

**Description:** Recombinant protein of human motilin (MLN), transcript variant 1, 1 mg

**Species:** Human

**Expression Host:** HEK293T

**Expression cDNA Clone or AA Sequence:** >RC222245 protein sequence  
**Red**=Cloning site **Green**=Tags(s)

MVSRKAVAALLVHAAAMLASQTEAFVPIFTYGELQRMQEKERNKGQKKSLSVWQRSGEEGPVDPAEPIR  
EEENEMIKLTAPLEIGMRMNSRQLEKYPATLEGLLSEMLPQHAAK

**TRTRPLEQKLISEEDLAANDILDYKDDDDKV**

**Tag:** C-Myc/DDK

**Predicted MW:** 10.3 kDa

**Concentration:** >0.05 µg/µL as determined by microplate BCA method

**Purity:** > 80% as determined by SDS-PAGE and Coomassie blue staining

**Buffer:** 25 mM Tris-HCl, 100 mM glycine, pH 7.3, 10% glycerol

**Preparation:** Recombinant protein was captured through anti-DDK affinity column followed by conventional chromatography steps.

**Note:** For testing in cell culture applications, please filter before use. Note that you may experience some loss of protein during the filtration process.

**Storage:** Store at -80°C.

**Stability:** Stable for 12 months from the date of receipt of the product under proper storage and handling conditions. Avoid repeated freeze-thaw cycles.

**RefSeq:** [NP\\_002409](#)

**Locus ID:** 4295

**UniProt ID:** [P12872](#)

**RefSeq Size:** 572

**Cytogenetics:** 6p21.31



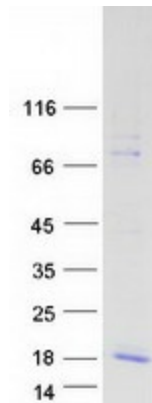
[View online »](#)

RefSeq ORF: 345

**Summary:** This gene encodes a small peptide hormone that is secreted by cells of the small intestine to regulate gastrointestinal contractions and motility. Proteolytic processing of the secreted protein produces the mature peptide and a byproduct referred to as motilin-associated peptide (MAP). Three transcript variants encoding different preproprotein isoforms but the same mature peptide have been found for this gene. [provided by RefSeq, May 2010]

**Protein Families:** Druggable Genome, Secreted Protein, Transmembrane

### Product images:



Coomassie blue staining of purified MLN protein (Cat# [TP322245]). The protein was produced from HEK293T cells transfected with MLN cDNA clone (Cat# [RC222245]) using MegaTran 2.0 (Cat# [TT210002]).