

Product datasheet for **TP322240M**

PACRG (NM_001080378) Human Recombinant Protein

Product data:

Product Type:	Recombinant Proteins
Description:	Recombinant protein of human PARK2 co-regulated (PACRG), transcript variant 2, 100 µg
Species:	Human
Expression Host:	HEK293T
Expression cDNA Clone or AA Sequence:	>RC222240 protein sequence Red =Cloning site Green =Tags(s)
	MVAEKETLSLNKCPDKMPKRTKLLAQQLPVHQPHSLVSEGFTVKAMMKNSVVRGPPAAGAFKERPTKPT AFRKFYERGFPIALEHDSKGNKIAWKVEIEKLDYHHYLPLFFDGLCEMTFPYEFFARQGIHDMLEHGGN KILPVLPLIPIKALNLRNRQVICVTLKVLQHLVSAEMVKGALVPYYRQILPVLNIFKNMNVNSGDG IDYSQQKRENIGDLIQETLEAFERYGGENAFINIKYVPTYESCLLN
	TRTRPLEQKLISEEDLAANDILDYKDDDDKV
Tag:	C-Myc/DDK
Predicted MW:	29.1 kDa
Concentration:	>0.05 µg/µL as determined by microplate BCA method
Purity:	> 80% as determined by SDS-PAGE and Coomassie blue staining
Buffer:	25 mM Tris-HCl, 100 mM glycine, pH 7.3, 10% glycerol
Bioactivity:	In vitro ubiquitination assay (PMID: 28038320)
Preparation:	Recombinant protein was captured through anti-DDK affinity column followed by conventional chromatography steps.
Note:	For testing in cell culture applications, please filter before use. Note that you may experience some loss of protein during the filtration process.
Storage:	Store at -80°C.
Stability:	Stable for 12 months from the date of receipt of the product under proper storage and handling conditions. Avoid repeated freeze-thaw cycles.
RefSeq:	NP_001073847
Locus ID:	135138



[View online »](#)

UniProt ID: [Q96M98](#)

RefSeq Size: 1585

Cytogenetics: 6q26

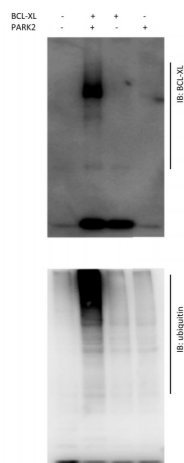
RefSeq ORF: 771

Synonyms: GLUP; HAK005771; PACRG2.1; PARK2CRG

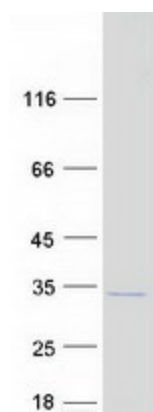
Summary: This gene encodes a protein that is conserved across metazoans. In vertebrates, this gene is linked in a head-to-head arrangement with the adjacent parkin gene, which is associated with autosomal recessive juvenile Parkinson's disease. These genes are co-regulated in various tissues and they share a bi-directional promoter. Both genes are associated with susceptibility to leprosy. The parkin co-regulated gene protein forms a large molecular complex with chaperones, including heat shock proteins 70 and 90, and chaperonin components. This protein is also a component of Lewy bodies in Parkinson's disease patients, and it suppresses unfolded Pael receptor-induced neuronal cell death. Multiple transcript variants encoding different isoforms have been found for this gene. [provided by RefSeq, Jul 2008]

Protein Families: Druggable Genome

Product images:



PARK2 E3 ubiquitin ligase ubiquitinates BCL-XL in vitro. Recombinant proteins BCL-XL and PARK2 (OriGene [TP322240]) were incubated in HEPES buffer, pH 8.0 containing E1, E2, ubiquitin, and Mg²⁺-ATP. Reactions were cultured for 10 min at 30 C, then 30 - 60 min at 37 C, and reaction samples were subjected to Western blot analysis with the indicated antibodies. Figure cited from Neoplasia, PMID: 28038320



Coomassie blue staining of purified PACRG protein (Cat# [TP322240]). The protein was produced from HEK293T cells transfected with PACRG cDNA clone (Cat# [RC222240]) using MegaTran 2.0 (Cat# [TT210002]).