

Product datasheet for **TP322215M**

Cofilin 2 (CFL2) (NM_138638) Human Recombinant Protein

Product data:

Product Type: Recombinant Proteins

Description: Recombinant protein of human cofilin 2 (muscle) (CFL2), transcript variant 2, 100 µg

Species: Human

Expression Host: HEK293T

**Expression cDNA Clone
or AA Sequence:** >RC222215 protein sequence
Red=Cloning site **Green**=Tags(s)

MASGVTVNDEVIKVFNDMKVRKSSTQEEIKRKKAVLFCLSDDKRQIIVEEAKQILVGDIGDTPYTS
FVKLLPLNDCRYALYDATYETKESKKEDLVFIFWAPESAPLKSKMIYASSKDAIKKKFTGIKHEWQVNGL
DDIKDRSTLGEKLGGNVVSLEGKPL

TRTRPLEQKLISEEDLAANDILDYKDDDDKV

Tag: C-Myc/DDK

Predicted MW: 18.6 kDa

Concentration: >0.05 µg/µL as determined by microplate BCA method

Purity: > 80% as determined by SDS-PAGE and Coomassie blue staining

Buffer: 25 mM Tris-HCl, 100 mM glycine, pH 7.3, 10% glycerol

Preparation: Recombinant protein was captured through anti-DDK affinity column followed by conventional chromatography steps.

Note: For testing in cell culture applications, please filter before use. Note that you may experience some loss of protein during the filtration process.

Storage: Store at -80°C.

Stability: Stable for 12 months from the date of receipt of the product under proper storage and handling conditions. Avoid repeated freeze-thaw cycles.

RefSeq: [NP_619579](#)

Locus ID: 1073

UniProt ID: [Q9Y281](#), [Q549N0](#)

RefSeq Size: 3267



[View online »](#)

Cytogenetics: 14q13.1

RefSeq ORF: 498

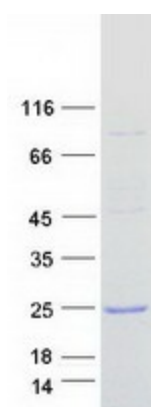
Synonyms: NEM7

Summary: This gene encodes an intracellular protein that is involved in the regulation of actin-filament dynamics. This protein is a major component of intranuclear and cytoplasmic actin rods. It can bind G- and F-actin in a 1:1 ratio of cofilin to actin, and it reversibly controls actin polymerization and depolymerization in a pH-dependent manner. Mutations in this gene cause nemaline myopathy type 7, a form of congenital myopathy. Alternative splicing results in multiple transcript variants. [provided by RefSeq, Jul 2009]

Protein Families: Druggable Genome

Protein Pathways: Axon guidance, Fc gamma R-mediated phagocytosis, Regulation of actin cytoskeleton

Product images:



Coomassie blue staining of purified CFL2 protein (Cat# [TP322215]). The protein was produced from HEK293T cells transfected with CFL2 cDNA clone (Cat# [RC222215]) using MegaTran 2.0 (Cat# [TT210002]).