

## Product datasheet for TP322215L

### Cofilin 2 (CFL2) (NM\_138638) Human Recombinant Protein

#### Product data:

Product Type:	Recombinant Proteins
Description:	Recombinant protein of human cofilin 2 (muscle) (CFL2), transcript variant 2, 1 mg
Species:	Human
Expression Host:	HEK293T
Expression cDNA Clone or AA Sequence:	>RC222215 protein sequence Red=Cloning site Green=Tags(s)
	MASGVTVNDEVIKVFNDMKVRKSSTQEEIKRKKAVLFCLSDDKRQIIVEEAKQILVGDIGDTPYTS FVKLLPLNDCRYALYDATYETKESKKEDLVFIFWAPESAPLKSKMIYASSKDAIKKKFTGIKHEWQVNGL DDIKDRSTLGEKLGGNVVSLEGKPL
	TRTRPLEQKLISEEDLAANDILDYKDDDDKV
Tag:	C-Myc/DDK
Predicted MW:	18.6 kDa
Concentration:	>0.05 µg/µL as determined by microplate BCA method
Purity:	> 80% as determined by SDS-PAGE and Coomassie blue staining
Buffer:	25 mM Tris-HCl, 100 mM glycine, pH 7.3, 10% glycerol
Preparation:	Recombinant protein was captured through anti-DDK affinity column followed by conventional chromatography steps.
Note:	For testing in cell culture applications, please filter before use. Note that you may experience some loss of protein during the filtration process.
Storage:	Store at -80°C.
Stability:	Stable for 12 months from the date of receipt of the product under proper storage and handling conditions. Avoid repeated freeze-thaw cycles.
RefSeq:	<a href="#">NP_619579</a>
Locus ID:	1073
UniProt ID:	<a href="#">Q9Y281</a> , <a href="#">Q549N0</a>
RefSeq Size:	3267



[View online »](#)

Cytogenetics: 14q13.1

RefSeq ORF: 498

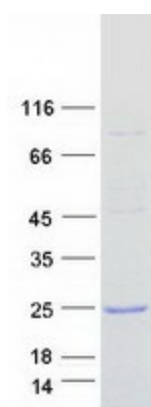
Synonyms: NEM7

**Summary:** This gene encodes an intracellular protein that is involved in the regulation of actin-filament dynamics. This protein is a major component of intranuclear and cytoplasmic actin rods. It can bind G- and F-actin in a 1:1 ratio of cofilin to actin, and it reversibly controls actin polymerization and depolymerization in a pH-dependent manner. Mutations in this gene cause nemaline myopathy type 7, a form of congenital myopathy. Alternative splicing results in multiple transcript variants. [provided by RefSeq, Jul 2009]

**Protein Families:** Druggable Genome

**Protein Pathways:** Axon guidance, Fc gamma R-mediated phagocytosis, Regulation of actin cytoskeleton

### Product images:



Coomassie blue staining of purified CFL2 protein (Cat# [TP322215]). The protein was produced from HEK293T cells transfected with CFL2 cDNA clone (Cat# [RC222215]) using MegaTran 2.0 (Cat# [TT210002]).