

Product datasheet for TP322176L

LCE3A (NM_178431) Human Recombinant Protein

Product data:

Product Type: Recombinant Proteins

Description: Recombinant protein of human late cornified envelope 3A (LCE3A), 1 mg

Species: Human

Expression Host: HEK293T

Expression cDNA Clone or AA Sequence: >RC222176 representing NM_178431

Red=Cloning site **Green**=Tags(s)

MSCQQNQQCQPPPKCPAKSPAQCLPPASSSCAPSSGGCGPSSERSCCLSHHRCRRSHRCRCQSSNSCDR
GSGQQGGSSSCGHSSAGCC

TRTRPLEQKLISEEDLAANDILDYKDDDDKV

Tag: C-Myc/DDK

Predicted MW: 9 kDa

Concentration: >0.05 µg/µL as determined by microplate BCA method

Purity: > 80% as determined by SDS-PAGE and Coomassie blue staining

Buffer: 25 mM Tris-HCl, 100 mM glycine, pH 7.3, 10% glycerol

Preparation: Recombinant protein was captured through anti-DDK affinity column followed by conventional chromatography steps.

Note: For testing in cell culture applications, please filter before use. Note that you may experience some loss of protein during the filtration process.

Storage: Store at -80°C.

Stability: Stable for 12 months from the date of receipt of the product under proper storage and handling conditions. Avoid repeated freeze-thaw cycles.

RefSeq: [NP_848518](#)

Locus ID: 353142

UniProt ID: [Q5TA76](#)

RefSeq Size: 270

Cytogenetics: 1q21.3



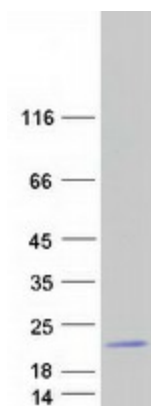
[View online »](#)

RefSeq ORF: 267

Synonyms: LEP13

Summary: A structural component of the cornified envelope of the stratum corneum involved in innate cutaneous host defense (Probable). Possesses defensin-like antimicrobial activity against a broad spectrum of Gram-positive and Gram-negative bacteria, both aerobic and anaerobic species. Upon inflammation, may regulate skin barrier repair by shaping cutaneous microbiota composition and immune response to bacterial antigens (PubMed:28634035).[UniProtKB/Swiss-Prot Function]

Product images:



Coomassie blue staining of purified LCE3A protein (Cat# [TP322176]). The protein was produced from HEK293T cells transfected with LCE3A cDNA clone (Cat# [RC222176]) using MegaTran 2.0 (Cat# [TT210002]).