

Product datasheet for **TP322176**

LCE3A (NM_178431) Human Recombinant Protein

Product data:

Product Type:	Recombinant Proteins
Description:	Recombinant protein of human late cornified envelope 3A (LCE3A), 20 µg
Species:	Human
Expression Host:	HEK293T
Expression cDNA Clone or AA Sequence:	>RC222176 representing NM_178431 Red =Cloning site Green =Tags(s) MSCQQNQQCQPPPKCPAKSPAQCLPPASSSCAPSSGGCGPSSERSCCLSHHRCRRSHRCRCQSSNSCDR GSGQQGGSSSCGHSSAGCC TRTRPLEQKLISEEDLAANDILDYKDDDDKV
Tag:	C-Myc/DDK
Predicted MW:	9 kDa
Concentration:	>0.05 µg/µL as determined by microplate BCA method
Purity:	> 80% as determined by SDS-PAGE and Coomassie blue staining
Buffer:	25 mM Tris-HCl, 100 mM glycine, pH 7.3, 10% glycerol
Preparation:	Recombinant protein was captured through anti-DDK affinity column followed by conventional chromatography steps.
Note:	For testing in cell culture applications, please filter before use. Note that you may experience some loss of protein during the filtration process.
Storage:	Store at -80°C.
Stability:	Stable for 12 months from the date of receipt of the product under proper storage and handling conditions. Avoid repeated freeze-thaw cycles.
RefSeq:	NP_848518
Locus ID:	353142
UniProt ID:	Q5TA76
RefSeq Size:	270
Cytogenetics:	1q21.3



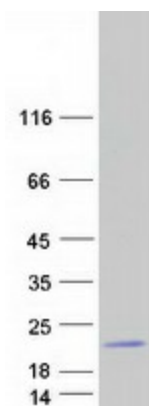
[View online »](#)

RefSeq ORF: 267

Synonyms: LEP13

Summary: A structural component of the cornified envelope of the stratum corneum involved in innate cutaneous host defense (Probable). Possesses defensin-like antimicrobial activity against a broad spectrum of Gram-positive and Gram-negative bacteria, both aerobic and anaerobic species. Upon inflammation, may regulate skin barrier repair by shaping cutaneous microbiota composition and immune response to bacterial antigens (PubMed:28634035).[UniProtKB/Swiss-Prot Function]

Product images:



Coomassie blue staining of purified LCE3A protein (Cat# TP322176). The protein was produced from HEK293T cells transfected with LCE3A cDNA clone (Cat# [RC222176]) using MegaTran 2.0 (Cat# [TT210002]).