

Product datasheet for **TP322172M**

ISM1 (NM_080826) Human Recombinant Protein

Product data:

Product Type: Recombinant Proteins

Description: Recombinant protein of human isthmin 1 homolog (zebrafish) (ISM1), 100 µg

Species: Human

Expression Host: HEK293T

Expression cDNA Clone or AA Sequence: >RC222172 representing NM_080826

Red=Cloning site **Green**=Tags(s)

MVRLAAELLLLLLGLLLTLHITVLRGSGAADGPDAAAGNASQAQLQNNLNVGSDTTSETSFSLKEAPRE
HLDHQAHHQPFPRPRFRQETGHPSLQRDFPRSFLDLNFPDLKADINGQNPNIQVTIEWDGPDSEAD
KDQHPENKPSWSVSPDWRAWWRSLARANSQDQDYKDYDSTSDSNFLNPPRGWDHTAPGHRTFETKD
QPEYDSTDGEGDWSLWSVCSVTCGNGNQKRTRSCGYACTATESRTCDRPNCPGIEDTFRTAATEVSLLAG
SEEFNATKLFVDTDSCERWMSCKSEFLKMYMHKVMNDLPSCPCSYPTVEAYSTADIFDRIKRKDFRWKD
ASGPKEKLEIYKPTARYCIRSMLSLESTTLAAQHCCYGDNMQLITRGKGAGTPNLISTEFSaelHYKVDV
LPWICKGDWSRYNEARPPNNGQKCTESPSDEDYIKQFQEAERY

SGPTRRRLEQKLISEEDLAANDILDYKDDDDKV

Tag: C-Myc/DDK

Predicted MW: 51.9 kDa

Concentration: >0.05 µg/µL as determined by microplate BCA method

Purity: > 80% as determined by SDS-PAGE and Coomassie blue staining

Buffer: 25 mM Tris-HCl, 100 mM glycine, pH 7.3, 10% glycerol

Preparation: Recombinant protein was captured through anti-DDK affinity column followed by conventional chromatography steps.

Note: For testing in cell culture applications, please filter before use. Note that you may experience some loss of protein during the filtration process.

Storage: Store at -80°C.

Stability: Stable for 12 months from the date of receipt of the product under proper storage and handling conditions. Avoid repeated freeze-thaw cycles.

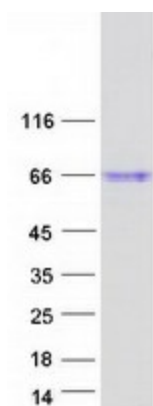
RefSeq: [NP_543016](#)



[View online »](#)

Locus ID:	140862
UniProt ID:	B1AKI9
RefSeq Size:	2610
Cytogenetics:	20p12.1
RefSeq ORF:	1392
Synonyms:	bA149I18.1; C20orf82; dj1077I2.1; ISM; Isthmin
Summary:	Acts as an angiogenesis inhibitor.[UniProtKB/Swiss-Prot Function]

Product images:



Coomassie blue staining of purified ISM1 protein (Cat# [TP322172]). The protein was produced from HEK293T cells transfected with ISM1 cDNA clone (Cat# [RC222172]) using MegaTran 2.0 (Cat# [TT210002]).