

Product datasheet for TP322172

ISM1 (NM_080826) Human Recombinant Protein

Product data:

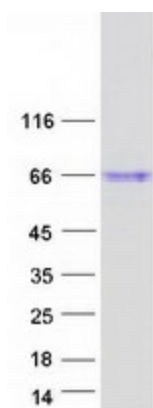
Product Type:	Recombinant Proteins
Description:	Recombinant protein of human isthmin 1 homolog (zebrafish) (ISM1), 20 µg
Species:	Human
Expression Host:	HEK293T
Expression cDNA Clone or AA Sequence:	>RC222172 representing NM_080826 Red =Cloning site Green =Tags(s)
	<p>MVRLAAELLLLLLGLLLTLHITVLRGSGAADGPDAAAGNASQAQLQNNLNVGSDTTSETSFSLKEAPRE HLDHQAHHQPFPRPRFRQETGHPSLQRDFPRSFLDLNFPDLKADINGQNPNIQVTIEVDGPDSEAD KDQHPENKPSWSVSPDWRAWWRSLARANSQDQDYKYDSTSDSNFLNPPRGWDHTAPGHRTFETKD QPEYDSTDGEGDWSLWSVCSVTCGNGNQKRTRSCGYACTATESRTCDRPNCPGIEDTFRTAATEVSLLAG SEEFNATKLFVDTDSCERWMSCKSEFLKMYMHKVMNDLPSCPCSYPTVEAYSTADIFDRIKRKDFRWKD ASGPKEKLEIYKPTARYCIRSMLSLESTTLAAQHCCYGDNMQLITRGKGAGTPNLISTEFSaelHYKVDV LPWICKGDWSRYNEARPPNNGQKCTESPSDEDYIKQFQEAERY</p> <p>SGPTRRRLEQKLISEEDLAANDILDYKDDDDKV</p>
Tag:	C-Myc/DDK
Predicted MW:	51.9 kDa
Concentration:	>0.05 µg/µL as determined by microplate BCA method
Purity:	> 80% as determined by SDS-PAGE and Coomassie blue staining
Buffer:	25 mM Tris-HCl, 100 mM glycine, pH 7.3, 10% glycerol
Preparation:	Recombinant protein was captured through anti-DDK affinity column followed by conventional chromatography steps.
Note:	For testing in cell culture applications, please filter before use. Note that you may experience some loss of protein during the filtration process.
Storage:	Store at -80°C.
Stability:	Stable for 12 months from the date of receipt of the product under proper storage and handling conditions. Avoid repeated freeze-thaw cycles.
RefSeq:	<u>NP_543016</u>



[View online »](#)

Locus ID:	140862
UniProt ID:	B1AKI9
RefSeq Size:	2610
Cytogenetics:	20p12.1
RefSeq ORF:	1392
Synonyms:	bA149I18.1; C20orf82; dj1077I2.1; ISM; Isthmin
Summary:	Acts as an angiogenesis inhibitor.[UniProtKB/Swiss-Prot Function]

Product images:



Coomassie blue staining of purified ISM1 protein (Cat# TP322172). The protein was produced from HEK293T cells transfected with ISM1 cDNA clone (Cat# [RC222172]) using MegaTran 2.0 (Cat# [TT210002]).