

Product datasheet for **TP322170M**

ROPN1B (NM_001012337) Human Recombinant Protein

Product data:

| | |
|---------------------------------------|---|
| Product Type: | Recombinant Proteins |
| Description: | Recombinant protein of human ropporin, rhophilin associated protein 1B (ROPN1B), 100 µg |
| Species: | Human |
| Expression Host: | HEK293T |
| Expression cDNA Clone or AA Sequence: | >RC222170 representing NM_001012337 Red =Cloning site Green =Tags(s) |
| | MAQTDKPTCIPPELPKMLKEFAKAAIRAQPQDLIQWGADYFEALSRGETPPVRERSERVLCNWAELTPE LLKILHSQVAGRLIIRAEELAQMWKVNLPTDLFNSVMNVGRFTEEIWLKFLALACALGVTITKTLKI VCEVLSCDHNGGLPRIPFSTFQFLYTYIAEVDGEICASHVSRMLNYIEQEVIGPDGLITVNDFTQNP RWLE TRTRPLEQKLISEEDLAANDILDYKDDDDKV |
| Tag: | C-Myc/DDK |
| Predicted MW: | 23.8 kDa |
| Concentration: | >0.05 µg/µL as determined by microplate BCA method |
| Purity: | > 80% as determined by SDS-PAGE and Coomassie blue staining |
| Buffer: | 25 mM Tris-HCl, 100 mM glycine, pH 7.3, 10% glycerol |
| Preparation: | Recombinant protein was captured through anti-DDK affinity column followed by conventional chromatography steps. |
| Note: | For testing in cell culture applications, please filter before use. Note that you may experience some loss of protein during the filtration process. |
| Storage: | Store at -80°C. |
| Stability: | Stable for 12 months from the date of receipt of the product under proper storage and handling conditions. Avoid repeated freeze-thaw cycles. |
| RefSeq: | <u>NP_001012337</u> |
| Locus ID: | 152015 |
| UniProt ID: | <u>Q9BZX4</u> |



[View online »](#)

RefSeq Size: 1018

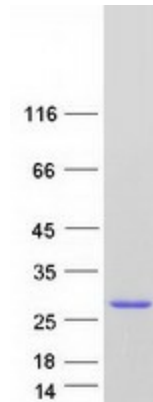
Cytogenetics: 3q21.2

RefSeq ORF: 636

Summary: Important for male fertility. With ROPN1L, involved in fibrous sheath integrity and sperm motility, plays a role in PKA-dependent signaling processes required for spermatozoa capacitation.[UniProtKB/Swiss-Prot Function]

Protein Families: Druggable Genome

Product images:



Coomassie blue staining of purified ROPN1B protein (Cat# [TP322170]). The protein was produced from HEK293T cells transfected with ROPN1B cDNA clone (Cat# [RC222170]) using MegaTran 2.0 (Cat# [TT210002]).