

Product datasheet for **TP322163M**

CHN 1 (CHN1) (NM_001822) Human Recombinant Protein

Product data:

Product Type:	Recombinant Proteins
Description:	Recombinant protein of human chimerin (chimaerin) 1 (CHN1), transcript variant 1, 100 µg
Species:	Human
Expression Host:	HEK293T
Expression cDNA	>RC222163 representing NM_001822
Clone or AA Sequence:	Red=Cloning site Green=Tags(s)

MALTLFDTDEYRPPVWKSYLEQLQEQEAPHPRRITCTCEVENRPKYYGREFHGMISREAADQLLIVAEGSY
LIREQRQPGTYTLALRFGSQTRNFRLLYYDGKHFVGEKRFESIHDLVTDGLITLYIETKAAEYIAKMTIN
PIYEHVGYTTLNREPAYKKHMPVLKETHDERDSTGQDGVSEKRLTSLVRRATLKENEQIPKYEKIHNFKV
HTFRGPHWCEYCANFMWGLIAQGVKCADCGLNVHKQCSKMVPNDCKPDLKHVKVYSCDLTTLVKAHTTK
RPMWVDMCIREIESRGLNSEGLYRVSGFSDLIEDVKMAFDRDGEKADISVNMEDINIITGALKLYFRDL
PIPLITYDAYPKFIESAKIMDPDEQLETLHEALKLLPPAHCETLRYLMAHLKRVTLHEKENLMNAENLGI
VFGPTLMRSPELDAMAALNDIRYQRLVVELLIKNEIDILF

TRTRPLEQKLISEEDLAANDILDYKDDDDKV

Tag:	C-Myc/DDK
Predicted MW:	53 kDa
Concentration:	>0.05 µg/µL as determined by microplate BCA method
Purity:	> 80% as determined by SDS-PAGE and Coomassie blue staining
Buffer:	25 mM Tris-HCl, 100 mM glycine, pH 7.3, 10% glycerol
Preparation:	Recombinant protein was captured through anti-DDK affinity column followed by conventional chromatography steps.
Note:	For testing in cell culture applications, please filter before use. Note that you may experience some loss of protein during the filtration process.
Storage:	Store at -80°C.
Stability:	Stable for 12 months from the date of receipt of the product under proper storage and handling conditions. Avoid repeated freeze-thaw cycles.
RefSeq:	<u>NP_001813</u>

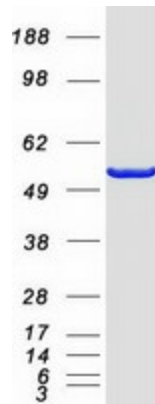


[View online »](#)

Locus ID: 1123
UniProt ID: [P15882](#)
RefSeq Size: 2607
Cytogenetics: 2q31.1
RefSeq ORF: 1377
Synonyms: ARHGAP2; CHN; DURS2; NC; RHOGAP2

Summary: This gene encodes GTPase-activating protein for ras-related p21-rac and a phorbol ester receptor. It is predominantly expressed in neurons, and plays an important role in neuronal signal-transduction mechanisms. Mutations in this gene are associated with Duane's retraction syndrome 2 (DURS2). Alternatively spliced transcript variants encoding different isoforms have been described for this gene. [provided by RefSeq, Apr 2011]

Product images:



Coomassie blue staining of purified CHN1 protein (Cat# [TP322163]). The protein was produced from HEK293T cells transfected with CHN1 cDNA clone (Cat# [RC222163]) using MegaTran 2.0 (Cat# [TT210002]).