

## Product datasheet for **TP322162M**

### **Rab11 (RAB11B) (NM\_004218) Human Recombinant Protein**

#### Product data:

Product Type:	Recombinant Proteins
Description:	Recombinant protein of human RAB11B, member RAS oncogene family (RAB11B), 100 µg
Species:	Human
Expression Host:	HEK293T
Expression cDNA Clone or AA Sequence:	>RC222162 protein sequence <b>Red</b> =Cloning site <b>Green</b> =Tags(s)

MGTRDDEYDYLFKVVLLIGDSGVGKSNLLSRFTRNEFNLESKSTIGVEFATRSIQVDGKTIKAQIWDTAGQ  
ERYRAITSAYYRGAVGALLVYDIAKHLTYENVERWLKELRDHADSNIVIMLVGNKSDLRHLRAVPTDEAR  
AFAEKNLNSFIETSALDSTNVEEAFKNILTEIYRIVSQKQIADRAAHDESPGNVVDISVPPTTDGQKPN  
KLQCCQNL

**TRTRPLEQKLISEEDLAANDILDYKDDDDKV**

Tag:	C-Myc/DDK
Predicted MW:	24.3 kDa
Concentration:	>0.05 µg/µL as determined by microplate BCA method
Purity:	> 80% as determined by SDS-PAGE and Coomassie blue staining
Buffer:	25 mM Tris-HCl, 100 mM glycine, pH 7.3, 10% glycerol
Preparation:	Recombinant protein was captured through anti-DDK affinity column followed by conventional chromatography steps.
Note:	For testing in cell culture applications, please filter before use. Note that you may experience some loss of protein during the filtration process.
Storage:	Store at -80°C.
Stability:	Stable for 12 months from the date of receipt of the product under proper storage and handling conditions. Avoid repeated freeze-thaw cycles.
RefSeq:	<a href="#">NP_004209</a>
Locus ID:	9230
UniProt ID:	<a href="#">Q15907</a>



[View online »](#)

RefSeq Size: 1635

Cytogenetics: 19p13.2

RefSeq ORF: 654

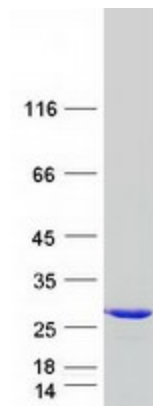
Synonyms: H-YPT3; NDAGSCW

**Summary:** The Ras superfamily of small GTP-binding proteins, which includes the Ras (see MIM 190020), Ral (see MIM 179550), Rho (see MIM 165390), Rap (see MIM 179520), and Rab (see MIM 179508) families, is involved in controlling a diverse set of essential cellular functions. The Rab family, including RAB11B, appears to play a critical role in regulating exocytotic and endocytotic pathways (summary by Zhu et al., 1994 [PubMed 7811277]).[supplied by OMIM, Nov 2010]

**Protein Families:** Druggable Genome

**Protein Pathways:** Endocytosis

### Product images:



Coomassie blue staining of purified RAB11B protein (Cat# [TP322162]). The protein was produced from HEK293T cells transfected with RAB11B cDNA clone (Cat# [RC222162]) using MegaTran 2.0 (Cat# [TT210002]).