

## Product datasheet for TP322158M

### FAM9C (NM\_174901) Human Recombinant Protein

#### Product data:

Product Type:	Recombinant Proteins
Description:	Recombinant protein of human family with sequence similarity 9, member C (FAM9C), 100 µg
Species:	Human
Expression Host:	HEK293T
Expression cDNA Clone or AA Sequence:	>RC222158 protein sequence <b>Red</b> =Cloning site <b>Green</b> =Tags(s)
	MAAKDQLEVQVMAAQEMELAGKDPVSHEHEERKPVTTETKEGDVTDHGERGSFAETDEHTGVDTKELEDI AADIKEHLAAKRKRIEKIAKACSEIKNRIKNVLRRTTQLKRQKRDRYRISLKLPNVLEEFITDEQKDEEGDG EKEEQIKIFQEQQRWQQDGKGTERR
	<b>TRTRPLEQKLISEEDLAANDILDYKDDDDKV</b>
Tag:	C-Myc/DDK
Predicted MW:	19 kDa
Concentration:	>0.05 µg/µL as determined by microplate BCA method
Purity:	> 80% as determined by SDS-PAGE and Coomassie blue staining
Buffer:	25 mM Tris-HCl, 100 mM glycine, pH 7.3, 10% glycerol
Preparation:	Recombinant protein was captured through anti-DDK affinity column followed by conventional chromatography steps.
Note:	For testing in cell culture applications, please filter before use. Note that you may experience some loss of protein during the filtration process.
Storage:	Store at -80°C.
Stability:	Stable for 12 months from the date of receipt of the product under proper storage and handling conditions. Avoid repeated freeze-thaw cycles.
RefSeq:	<a href="#">NP_777561</a>
Locus ID:	171484
UniProt ID:	<a href="#">Q8IZT9</a> , <a href="#">A0A024RBW5</a>
RefSeq Size:	1255



[View online »](#)

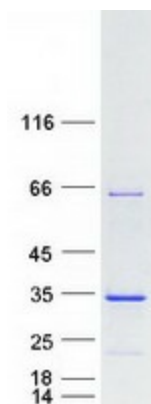
Cytogenetics: Xp22.2

RefSeq ORF: 498

Synonyms: TEX39C

**Summary:** This gene is a member of a gene family which arose through duplication on the X chromosome. The encoded protein may be localized to the nucleus as the protein contains several nuclear localization signals, and has similarity to a synaptonemal complex protein. [provided by RefSeq, Aug 2011]

### Product images:



Coomassie blue staining of purified FAM9C protein (Cat# [TP322158]). The protein was produced from HEK293T cells transfected with FAM9C cDNA clone (Cat# [RC222158]) using MegaTran 2.0 (Cat# [TT210002]).