

## Product datasheet for **TP322121M**

### **CAMK2D (NM\_172128) Human Recombinant Protein**

#### **Product data:**

**Product Type:** Recombinant Proteins

**Description:** Recombinant protein of human calcium/calmodulin-dependent protein kinase II delta (CAMK2D), transcript variant 2, 100 µg

**Species:** Human

**Expression Host:** HEK293T

**Expression cDNA Clone or AA Sequence:** >RC222121 protein sequence  
**Red**=Cloning site **Green**=Tags(s)

MASTTTCTRFTDEYQLFEELGKGAFSVVRRCKIPTGQEYAAKIINTKKLSARDHQKLEREARICRLLKH  
PNIVRLHDSISEEGFHYLVFDLVTGGELFEDIVAREYYSEADASHCIQQILESVDNHCHLNGIVHRDLKPE  
NLLASKSKGA AVKLADFLAIEVQGDQQA WFGFAGTPGYLSPEVLRKDPY GKPVD MWACGVILYLLVG  
YPPFWEDEDQHRLYQQIKAGAYDFPSPEWDTVTPEAKDLINKMLTINPAKRITASEALKHPWICQRSTVAS  
MMHRQETVDCLKKFNARRKLGAILTTMLATRNFSAAKSLKKPDG VKESTESSNTTIEDVDKARKQEI  
IKVTEQLIEAINNGDFEAYTKICDPGLTAFEPEALGNLVEGMDFHRFYFENALSKSNKPIHTIILNPHVH  
LVGDDAACIAYIRLTQYMDGSGMPKTMQSEETRVWHRRDGKWQNVHFHRS GSPTVPIK

**TRTRPLEQKLISEEDLAANDILDYKDDDDKV**

**Tag:** C-Myc/DDK

**Predicted MW:** 53.9 kDa

**Concentration:** >0.05 µg/µL as determined by microplate BCA method

**Purity:** > 80% as determined by SDS-PAGE and Coomassie blue staining

**Buffer:** 25 mM Tris-HCl, 100 mM glycine, pH 7.3, 10% glycerol

**Preparation:** Recombinant protein was captured through anti-DDK affinity column followed by conventional chromatography steps.

**Note:** For testing in cell culture applications, please filter before use. Note that you may experience some loss of protein during the filtration process.

**Storage:** Store at -80°C.

**Stability:** Stable for 12 months from the date of receipt of the product under proper storage and handling conditions. Avoid repeated freeze-thaw cycles.



[View online >](#)

RefSeq: [NP\\_742126](#)

Locus ID: 817

UniProt ID: [Q13557](#), [A8MVS8](#)

RefSeq Size: 5776

Cytogenetics: 4q26

RefSeq ORF: 1434

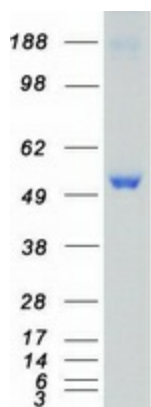
Synonyms: CAMKD

**Summary:** The product of this gene belongs to the serine/threonine protein kinase family and to the Ca(2+)/calmodulin-dependent protein kinase subfamily. Calcium signaling is crucial for several aspects of plasticity at glutamatergic synapses. In mammalian cells, the enzyme is composed of four different chains: alpha, beta, gamma, and delta. The product of this gene is a delta chain. Alternative splicing results in multiple transcript variants encoding distinct isoforms. Distinct isoforms of this chain have different expression patterns.[provided by RefSeq, Nov 2008]

**Protein Families:** Druggable Genome, Protein Kinase

**Protein Pathways:** Calcium signaling pathway, ErbB signaling pathway, Glioma, GnRH signaling pathway, Long-term potentiation, Melanogenesis, Neurotrophin signaling pathway, Olfactory transduction, Oocyte meiosis, Wnt signaling pathway

### Product images:



Coomassie blue staining of purified CAMK2D protein (Cat# [TP322121]). The protein was produced from HEK293T cells transfected with CAMK2D cDNA clone (Cat# [RC222121]) using MegaTran 2.0 (Cat# [TT210002]).