

Product datasheet for TP322113M

POLE2 (NM_002692) Human Recombinant Protein

Product data:

| | |
|---------------------------------------|---|
| Product Type: | Recombinant Proteins |
| Description: | Recombinant protein of human polymerase (DNA directed), epsilon 2 (p59 subunit) (POLE2), 100 µg |
| Species: | Human |
| Expression Host: | HEK293T |
| Expression cDNA Clone or AA Sequence: | >RC222113 protein sequence Red=Cloning site Green=Tags(s) |

MAPERLRSRALSAFKLRGLLLRGEAIKYLTEALQSISELELEDKLEKIINAVEKQPLSSNMIERSWEAA
VQEQSQSVDEETIEHVFNIIIGAFDIPRFVYNSERKKFLPLLMTNHPAPNLFGTPRDKAEMFRERYTILHQR
THRHELFTPPVIGSHPDSESGSKFQLKTIETLLGSTTKIGDAIVLGMITQLKEGKFFLEDPTGTVQLDSLK
AQFHSGLYTEACFVLAEGWFEDQVFHVNAFGFPPTPEPSSTTRAYYGNINFFGGPSNTSVKTSAKLKQLEE
ENKDAMFVFLSDVWLDQVEVLEKLRIMFAGYSPAPPTCFILCGNFSSAPYGKNQVQALKDSLKTLADIIC
EYPDIHQSSRFVFPDPEDPGFGSILPRPPLAESITNEFRQRPFSVFTTNPFCRIQYCTQEITVFREDLV
NKMCRNCVRFPSNLAIPNHFKTILSQGHLLTPLYVCPVYWAYDYALRVYPVDPDLLVIADKYDPFTTT
NTECLCINPGSFPFRSGFSFKVFYPSNKTVEDSKLQGF

TRTRPLEQKLISEEDLAANDILDYKDDDDKV

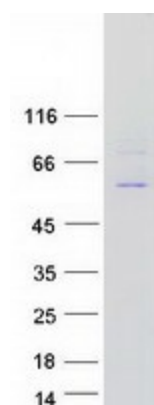
| | |
|----------------|--|
| Tag: | C-Myc/DDK |
| Predicted MW: | 59.4 kDa |
| Concentration: | >0.05 µg/µL as determined by microplate BCA method |
| Purity: | > 80% as determined by SDS-PAGE and Coomassie blue staining |
| Buffer: | 25 mM Tris-HCl, 100 mM glycine, pH 7.3, 10% glycerol |
| Preparation: | Recombinant protein was captured through anti-DDK affinity column followed by conventional chromatography steps. |
| Note: | For testing in cell culture applications, please filter before use. Note that you may experience some loss of protein during the filtration process. |
| Storage: | Store at -80°C. |



[View online »](#)

| | |
|--------------------------|---|
| Stability: | Stable for 12 months from the date of receipt of the product under proper storage and handling conditions. Avoid repeated freeze-thaw cycles. |
| RefSeq: | NP_002683 |
| Locus ID: | 5427 |
| UniProt ID: | P56282 |
| RefSeq Size: | 1861 |
| Cytogenetics: | 14q21.3 |
| RefSeq ORF: | 1581 |
| Synonyms: | DPE2 |
| Summary: | DNA polymerase epsilon, which is involved in DNA repair and replication, is composed of a large catalytic subunit and a small accessory subunit. The protein encoded by this gene represents the small subunit (B). Defects in this gene have been linked to colorectal cancer and to combined immunodeficiency. [provided by RefSeq, Jan 2017] |
| Protein Pathways: | Base excision repair, DNA replication, Metabolic pathways, Nucleotide excision repair, Purine metabolism, Pyrimidine metabolism |

Product images:



Coomassie blue staining of purified POLE2 protein (Cat# [TP322113]). The protein was produced from HEK293T cells transfected with POLE2 cDNA clone (Cat# [RC222113]) using MegaTran 2.0 (Cat# [TT210002]).